

For Research Use Only

POTE A-Specific Recombinant antibody

Catalog Number: 84298-1-RR



Basic Information

Catalog Number:

84298-1-RR

Size:

1000 µg/ml

Source:

Rabbit

Isotype:

IgG

GenBank Accession Number:

NM_001002920

GeneID (NCBI):

340441

UNIPROT ID:

Q658J7

Full Name:

POTE ankyrin domain family,
member A

Calculated MW:

56 kDa

Purification Method:

Protein A purification

CloneNo.:

241187F7

Recommended Dilutions:

IHC 1:200-1:800

IF/ICC 1:125-1:500

Applications

Tested Applications:

IHC, IF/ICC, FC (Intra), ELISA

Species Specificity:

human

**Note-IHC: suggested antigen retrieval with
TE buffer pH 9.0; (*) Alternatively, antigen
retrieval may be performed with citrate
buffer pH 6.0**

Positive Controls:

IHC : mouse ovary tissue,

IF/ICC : HepG2 cells, HeLa cells

Background Information

POTE A, also named A26A1 and POTE8, belongs to the POTE family. POTE has an important signaling function in the reproductive system.

Storage

Storage:

Store at -20°C. Stable for one year after shipment.

Storage Buffer:

PBS with 0.02% sodium azide and 50% glycerol pH 7.3.

Aliquoting is unnecessary for -20°C storage

For technical support and original validation data for this product please contact:

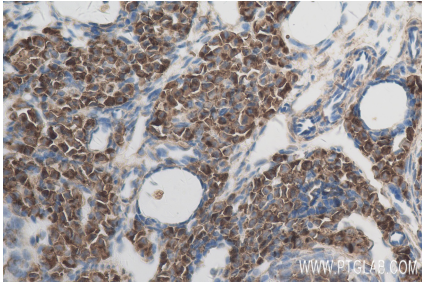
T: 4006900926

E: Proteintech-CN@ptglab.com

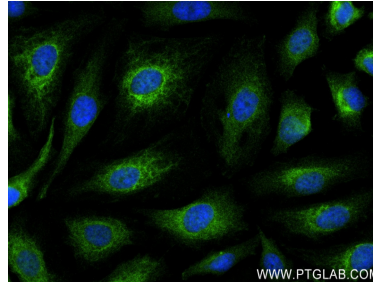
W: ptgcn.com

This product is exclusively available under Proteintech Group brand and is not available to purchase from any other manufacturer.

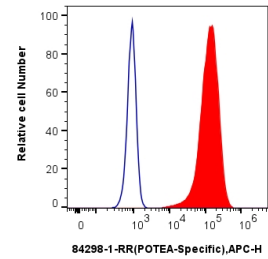
Selected Validation Data



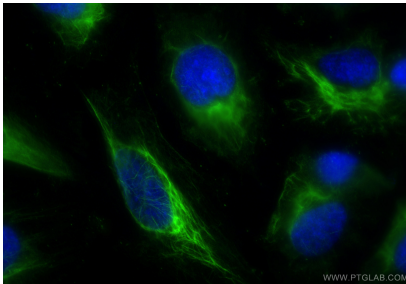
Immunohistochemical analysis of paraffin-embedded mouse ovary tissue slide using 84298-1-RR (POTEA-Specific antibody) at dilution of 1:400 (under 40x lens). Heat mediated antigen retrieval with Tris-EDTA buffer (pH 9.0).



Immunofluorescent analysis of (4% PFA) fixed HepG2 cells using POTEA-Specific antibody (84298-1-RR, Clone: 241187F7) at dilution of 1:250 and CoraLite®488-Conjugated AffiniPure Goat Anti-Rabbit IgG(H+L) (SA00013-2).



1x10⁶ HeLa cells were intracellularly stained with 0.25 ug POTEA-Specific Recombinant antibody (84298-1-RR, Clone:241187F7) and APC-Conjugated Goat Anti-Rabbit IgG(H+L)(red), or 0.25 ug Isotype Control (blue). Cells were fixed with 4% PFA and permeabilized with Flow Cytometry Perm Buffer (PF00011-C).



Immunofluorescent analysis of (-20°C Ethanol) fixed HeLa cells using POTEA-Specific antibody (84298-1-RR, Clone: 241187F7) at dilution of 1:500 and CoraLite®488-Conjugated Goat Anti-Rabbit IgG(H+L) (SA00013-2).