

For Research Use Only

MAP2 Recombinant antibody, PBS Only

Catalog Number: 84306-4-PBS



Basic Information

Catalog Number: 84306-4-PBS	GenBank Accession Number: BC038857	Purification Method: Protein A purification
Size: 1 mg/ml	GeneID (NCBI): 4133	CloneNo.: 241653H8
Source: Rabbit	UNIPROT ID: P11137	
Isotype: IgG	Full Name: microtubule-associated protein 2	
Immunogen Catalog Number: AG11580	Calculated MW: 200 kDa	

Applications

Tested Applications:
IF/ICC, Indirect ELISA

Species Specificity:
human

Background Information

MAP2 (microtubule-associated protein 2) is a cytoskeleton protein abundant in the brain and has an important role in neuronal morphogenesis. Multiple high MW and low MW MAP2 isoforms are expressed within the proximal segment of axons, dendrites, and cell bodies. The expression of MAP2 is regulated in both a tissue- and developmentally-specific manner. The 280 kDa MAP2B is present throughout rat brain development, and the slightly larger MAP2A appears first during the end of the second week of postnatal life. MAP2C, composed of several bands of about 70 kDa, is present during early brain development and largely disappears from the mature brain except for the retina, olfactory bulb, and cerebellum. In addition, some isoforms with lower MW around 50-60 kDa also exist.

Storage

Storage:
Store at -80°C.
The product is shipped with ice packs. Upon receipt, store it immediately at -80°C

Storage Buffer:
PBS Only

For technical support and original validation data for this product please contact:

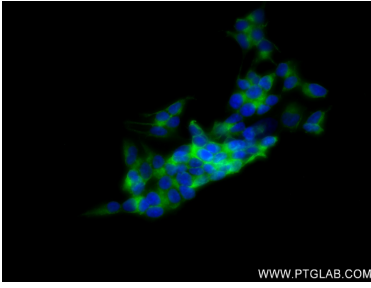
T: 4006900926

E: Proteintech-CN@ptglab.com

W: ptgcn.com

This product is exclusively available under Proteintech Group brand and is not available to purchase from any other manufacturer.

Selected Validation Data



Immunofluorescent analysis of (4% PFA) fixed SH-SY5Y cells using MAP2 antibody (84306-4-RR, Clone: 241653H8) at dilution of 1:250 and CoraLite®488-Conjugated Goat Anti-Rabbit IgG(H+L) (SA00013-2). This data was developed using the same antibody clone with 84306-4-PBS in a different storage buffer formulation.