

For Research Use Only

MAP2 Recombinant antibody

Catalog Number: 84306-4-RR



Basic Information

| | | |
|---|---|---|
| Catalog Number: 84306-4-RR | GenBank Accession Number: BC038857 | Purification Method: Protein A purification |
| Size: 850 µg/ml | GeneID (NCBI): 4133 | CloneNo.: 241653H8 |
| Source: Rabbit | UNIPROT ID: P11137 | Recommended Dilutions: IF/ICC 1:125-1:500 |
| Isotype: IgG | Full Name: microtubule-associated protein 2 | |
| Immunogen Catalog Number: AG11580 | Calculated MW: 200 kDa | |

Applications

| | |
|--|--|
| Tested Applications: IF/ICC, ELISA | Positive Controls: IF/ICC : SH-SY5Y cells, |
| Species Specificity: human | |

Background Information

MAP2 (microtubule-associated protein 2) is a cytoskeleton protein abundant in the brain and has an important role in neuronal morphogenesis. Multiple high MW and low MW MAP2 isoforms are expressed within the proximal segment of axons, dendrites, and cell bodies. The expression of MAP2 is regulated in both a tissue- and developmentally-specific manner. The 280 kDa MAP2B is present throughout rat brain development, and the slightly larger MAP2A appears first during the end of the second week of postnatal life. MAP2C, composed of several bands of about 70 kDa, is present during early brain development and largely disappears from the mature brain except for the retina, olfactory bulb, and cerebellum. In addition, some isoforms with lower MW around 50-60 kDa also exist.

Storage

Storage:
Store at -20°C. Stable for one year after shipment.
Storage Buffer:
PBS with 0.02% sodium azide and 50% glycerol pH 7.3.
Aliquoting is unnecessary for -20°C storage

For technical support and original validation data for this product please contact:

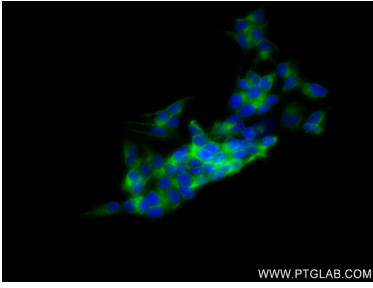
T: 4006900926

E: Proteintech-CN@ptglab.com

W: ptgcn.com

This product is exclusively available under Proteintech Group brand and is not available to purchase from any other manufacturer.

Selected Validation Data



Immunofluorescent analysis of (4% PFA) fixed SH-SY5Y cells using MAP2 antibody (84306-4-RR, Clone: 241653H8) at dilution of 1:250 and CoraLite®488-Conjugated Goat Anti-Rabbit IgG(H+L) (SA00013-2).