

For Research Use Only

MAP2 Recombinant antibody, PBS Only (Capture)

Catalog Number: 84306-5-PBS



Basic Information

Catalog Number: 84306-5-PBS	GenBank Accession Number: BC038857	Purification Method: Protein A purification
Size: 1 mg/ml	GeneID (NCBI): 4133	CloneNo.: 241653A8
Source: Rabbit	UNIPROT ID: P11137	
Isotype: IgG	Full Name: microtubule-associated protein 2	
Immunogen Catalog Number: AG11580	Calculated MW: 200 kDa	

Applications

Tested Applications:
Sandwich ELISA, Indirect ELISA, Sample test

Species Specificity:
human

Background Information

Storage

Storage:
Store at -80°C.
The product is shipped with ice packs. Upon receipt, store it immediately at -80°C

Storage Buffer:
PBS Only

For technical support and original validation data for this product please contact:

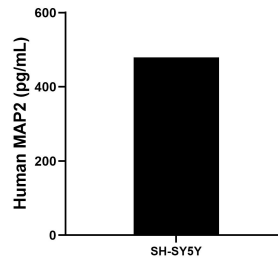
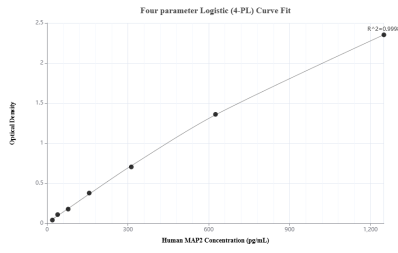
T: 4006900926

E: Proteintech-CN@ptglab.com

W: ptgcn.com

This product is exclusively available under Proteintech Group brand and is not available to purchase from any other manufacturer.

Selected Validation Data



Sandwich ELISA standard curve of MP01208-3, Human MAP2 Recombinant Matched Antibody Pair - PBS only. 84306-5-PBS was coated to a plate as the capture antibody and incubated with serial dilutions of standard Ag11580. 84306-3-PBS was HRP conjugated as the detection antibody. Range: 19.5-1250 pg/mL

The mean MAP2 concentration was determined to be 479.14 pg/mL in SH-SY5Y cell extract based on a 1.0 mg/mL extract load.