

For Research Use Only

# HCN2 Recombinant antibody, PBS Only (Detector)

Catalog Number: 84308-3-PBS



## Basic Information

Catalog Number: 84308-3-PBS	GenBank Accession Number: NM_001194	Purification Method: Protein A purification
Concentration: 1 mg/ml	GeneID (NCBI): 610	CloneNo.: 241601E10
Source: Rabbit	UNIPROT ID: Q9UL51	
Isotype: IgG	Full Name: hyperpolarization activated cyclic nucleotide-gated potassium channel 2	
Immunogen Catalog Number: AG34038	Calculated MW: 97 kDa	
	Observed MW: 110 kDa	

## Applications

**Tested Applications:**  
WB, Sandwich ELISA, Indirect ELISA, Sample test

**Species Specificity:**  
human, mouse, rat

## Background Information

HCN2, also named as BCNG2, belongs to the potassium channel HCN family. The molecular weight of immature HCN2 is 90 kDa, and the protein is about 120 kDa after n-terminal glycosylation. It has been found that 60 kDa of HCN2 protein can be identified in mouse heart samples. Although all protein isolation steps were handled on ice and in the presence of protease inhibitors to reduce protease-dependent effects and to minimize protein degradation, it is certainly possible that the presence of the 60 kDa HCN2 protein in the heart samples does, in fact, reflect protein degradation. (PMID:21796099, PMID: 19574228)

## Storage

**Storage:**  
Store at -80°C.  
**The product is shipped with ice packs. Upon receipt, store it immediately at -80°C**

**Storage Buffer:**  
PBS Only

For technical support and original validation data for this product please contact:

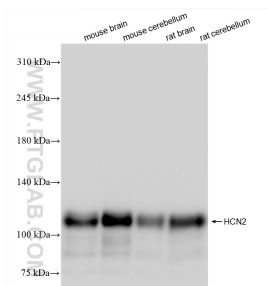
T: 4006900926

E: Proteintech-CN@ptglab.com

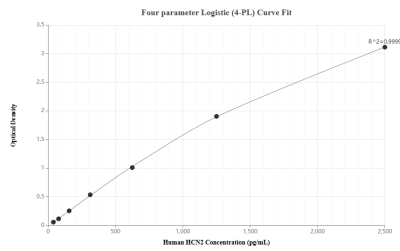
W: ptgcn.com

**This product is exclusively available under Proteintech Group brand and is not available to purchase from any other manufacturer.**

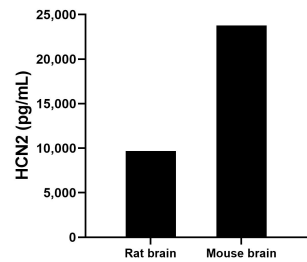
## Selected Validation Data



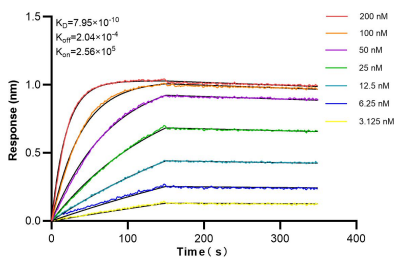
Various lysates were subjected to SDS PAGE followed by western blot with 84308-3-RR (HCN2 antibody) at dilution of 1:10000 incubated at room temperature for 1.5 hours. This data was developed using the same antibody clone with 84308-3-PBS in a different storage buffer formulation.



Sandwich ELISA standard curve of MP00160-2, Human HCN2 Recombinant Matched Antibody Pair - PBS only. 84308-4-PBS was coated to a plate as the capture antibody and incubated with serial dilutions of standard Ag34038. 84308-3-PBS was HRP conjugated as the detection antibody. Range: 39.1-2500 pg/mL



The mean HCN2 concentration was determined to be 9,765.2 ng/mL in rat brain tissue extract based on a 1.6 mg/mL extract load and 23,767.3 ng/mL in mouse brain tissue extract based on a 2.0 mg/mL extract load.



Bioluminescence resonance transfer (BLI) kinetic assays of 84308-3-RR against Human HCN2 were performed. The affinity constant is 0.795 nM.