

For Research Use Only

# CCT5 Recombinant antibody

Catalog Number: 84310-2-RR



## Basic Information

**Catalog Number:**

84310-2-RR

**Size:**

1000 ug/ml

**Source:**

Rabbit

**Isotype:**

IgG

**Immunogen Catalog Number:**

AG2146

**GenBank Accession Number:**

BC035499

**GeneID (NCBI):**

22948

**UNIPROT ID:**

P48643

**Full Name:**

chaperonin containing TCP1, subunit

5 (epsilon)

**Calculated MW:**

541 aa, 60 kDa

**Observed MW:**

60 kDa

**Purification Method:**

Protein A purification

**CloneNo.:**

241510B3

**Recommended Dilutions:**

WB 1:5000-1:50000

## Applications

**Tested Applications:**

WB, ELISA

**Species Specificity:**

human

**Positive Controls:**

WB: A431 cells, HEK-293T cells, HeLa cells, Jurkat cells, A549 cells, COLO 320 cells

## Background Information

CCT5 is a subunit of chaperonin containing TCP1 complex that is also known as the TCP1 ring complex (TRiC). CCT5 involves enhancing Wnt/ $\beta$ -catenin signalling activity in GCs through abrogating the interaction between E-cadherin and  $\beta$ -catenin (PMID: 35194191). The expression levels of CCT5 have been found to be upregulated in types of cancers, including breast cancer, colon cancer, lung cancer, glioblastoma, hepatocellular carcinoma and ovarian cancer (PMID: 36768350). Human CCT5 consist of 541 amino acids organized in  $\beta$ -sheets and  $\alpha$ -helixes distributed into three domains and has a predicted molecular weight of 60 kDa.

## Storage

**Storage:**

Store at -20°C. Stable for one year after shipment.

**Storage Buffer:**

PBS with 0.02% sodium azide and 50% glycerol pH 7.3.

Aliquoting is unnecessary for -20°C storage

For technical support and original validation data for this product please contact:

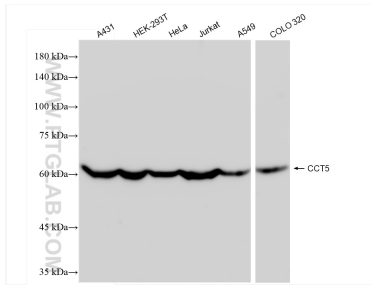
T: 4006900926

E: Proteintech-CN@ptglab.com

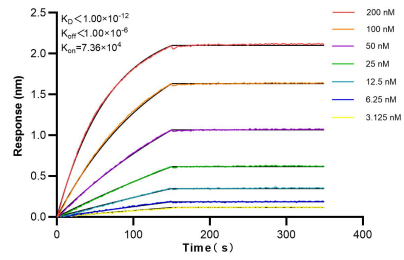
W: ptgcn.com

**This product is exclusively available under Proteintech Group brand and is not available to purchase from any other manufacturer.**

## Selected Validation Data



Various lysates were subjected to SDS PAGE followed by western blot with 84310-2-RR (CCT5 antibody) at dilution of 1:10000 incubated at room temperature for 1.5 hours.



Biolayer interferometry (BLI) kinetic assays of 84310-2-RR against Human CCT5 were performed. The affinity constant is below 1 pM.