

For Research Use Only

THOP1 Recombinant antibody, PBS Only (Capture)

Catalog Number: 84319-2-PBS



Basic Information

Catalog Number: 84319-2-PBS	GenBank Accession Number: BC000135	Purification Method: Protein A purification
Size: 1 mg/ml	GeneID (NCBI): 7064	CloneNo.: 241607E8
Source: Rabbit	UNIPROT ID: P52888	
Isotype: IgG	Full Name: thimet oligopeptidase 1	
Immunogen Catalog Number: AG2268	Calculated MW: 689 aa, 79 kDa	

Applications

Tested Applications:
Cytometric bead array, Sandwich ELISA, Indirect ELISA,
Sample test

Species Specificity:
human

Background Information

Storage

Storage:
Store at -80°C.
The product is shipped with ice packs. Upon receipt, store it immediately at -80°C

Storage Buffer:
PBS Only

For technical support and original validation data for this product please contact:

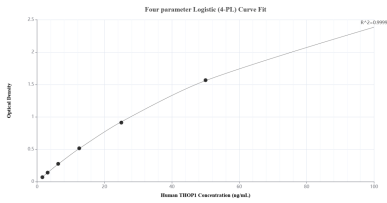
T: 4006900926

E: Proteintech-CN@ptglab.com

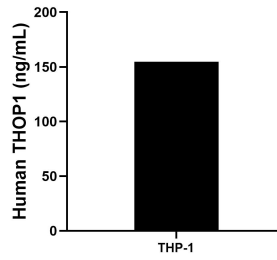
W: ptgcn.com

This product is exclusively available under Proteintech Group brand and is not available to purchase from any other manufacturer.

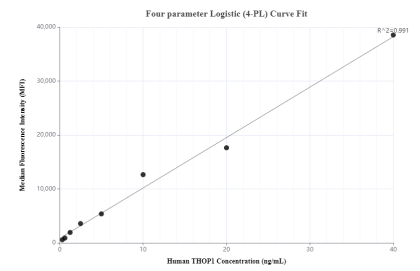
Selected Validation Data



Sandwich ELISA standard curve of MP01191-3, Human THOP1 Recombinant Matched Antibody Pair - PBS only. 84319-2-PBS was coated to a plate as the capture antibody and incubated with serial dilutions of standard Ag2268. 84319-3-PBS was HRP conjugated as the detection antibody. Range: 1.56-100 ng/mL



The mean THOP1 concentration was determined to be 154.80 ng/mL in THP-1 cell extract based on a 4.00 mg/mL extract load.



Cytometric bead array standard curve of MP01191-3, THOP1 Recombinant Matched Antibody Pair, PBS Only. Capture antibody: 84319-2-PBS. Detection antibody: 84319-3-PBS. Standard: Ag2268. Range: 0.313-40 ng/mL