

For Research Use Only

VIPAS39 Recombinant antibody, PBS Only (Capture)

Catalog Number:84320-2-PBS



Basic Information

Catalog Number: 84320-2-PBS	GenBank Accession Number: BC015054	Purification Method: Protein A purification
Size: 1 mg/ml	GeneID (NCBI): 63894	CloneNo.: 241616A12
Source: Rabbit	UNIPROT ID: Q9H9C1	
Isotype: IgG	Full Name: chromosome 14 open reading frame 133	
Immunogen Catalog Number: AG14762	Calculated MW: 493 aa, 57 kDa	
	Observed MW: 50 kDa	

Applications

Tested Applications:
WB, Cytometric bead array, Indirect ELISA

Species Specificity:
human, mouse

Background Information

VIPAS39 (also known as C14orf133 or SPE-39) is a binding protein to Vps33B, one of the subunits in the mammalian HOPS complex. VIPAS39 may be involved in endosomal maturation or fusion (PMID: 23918659). Mutations in Vps33B and VIPAS39 cause arthrogryposis-renal dysfunction-cholestasis (ARC) syndrome, which is a rare autosomal recessive multisystem disorder associated with abnormalities in polarized liver and kidney cells (PMID: 20190753).

Storage

Storage:
Store at -80°C.
The product is shipped with ice packs. Upon receipt, store it immediately at -80°C

Storage Buffer:
PBS Only

For technical support and original validation data for this product please contact:

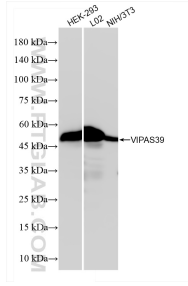
T: 4006900926

E: Proteintech-CN@ptglab.com

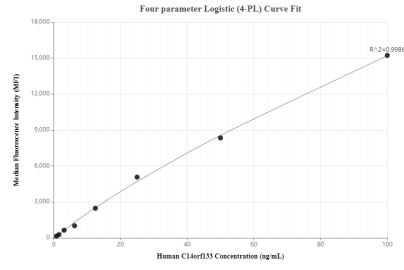
W: ptgcn.com

This product is exclusively available under Proteintech Group brand and is not available to purchase from any other manufacturer.

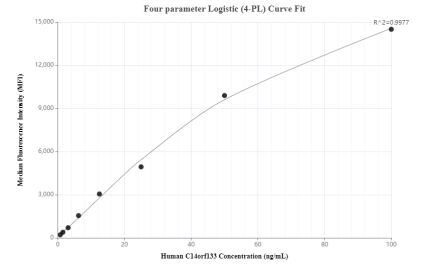
Selected Validation Data



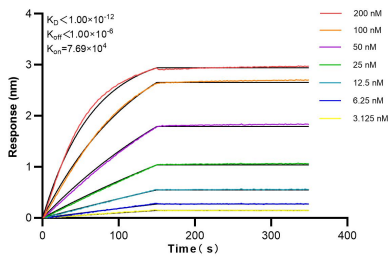
Various lysates were subjected to SDS PAGE followed by western blot with 84320-2-RR (C14orf133 antibody) at dilution of 1:20000 incubated at room temperature for 1.5 hours. This data was developed using the same antibody clone with 84320-2-PBS in a different storage buffer formulation.



Cytometric bead array standard curve of MP01194-2, C14orf133 Recombinant Matched Antibody Pair, PBS Only. Capture antibody: 84320-2-PBS. Detection antibody: 84320-3-PBS. Standard: Ag14762. Range: 0.781-100 ng/mL



Cytometric bead array standard curve of MP01194-3, C14orf133 Recombinant Matched Antibody Pair, PBS Only. Capture antibody: 84320-2-PBS. Detection antibody: 84320-1-PBS. Standard: Ag14762. Range: 0.781-100 ng/mL



Bi-layer interferometry (BLI) kinetic assays of 84320-2-RR against Human VIPAS39 were performed. The affinity constant is below 1 pM.