

For Research Use Only

# VIPAS39 Recombinant antibody

Catalog Number:84320-2-RR



## Basic Information

Catalog Number:

84320-2-RR

Size:

1000 ug/ml

Source:

Rabbit

Isotype:

IgG

Immunogen Catalog Number:

AG14762

GenBank Accession Number:

BC015054

GeneID (NCBI):

63894

UNIPROT ID:

Q9H9C1

Full Name:

chromosome 14 open reading frame

133

Calculated MW:

493 aa, 57 kDa

Observed MW:

50 kDa

Purification Method:

Protein A purification

CloneNo.:

241616A12

Recommended Dilutions:

WB 1:5000-1:50000

## Applications

Tested Applications:

WB, ELISA

Species Specificity:

human, mouse

Positive Controls:

WB : HEK-293 cells, L02 cells, NIH/3T3 cells

## Background Information

VIPAS39 (also known as C14orf133 or SPE-39) is a binding protein to Vps33B, one of the subunits in the mammalian HOPS complex. VIPAS39 may be involved in endosomal maturation or fusion (PMID: 23918659). Mutations in Vps33B and VIPAS39 cause arthrogryposis-renal dysfunction-cholestasis (ARC) syndrome, which is a rare autosomal recessive multisystem disorder associated with abnormalities in polarized liver and kidney cells (PMID: 20190753).

## Storage

Storage:

Store at -20°C. Stable for one year after shipment.

Storage Buffer:

PBS with 0.02% sodium azide and 50% glycerol pH 7.3.

Aliquoting is unnecessary for -20°C storage

For technical support and original validation data for this product please contact:

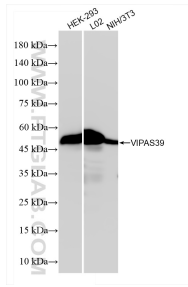
T: 4006900926

E: [Proteintech-CN@ptglab.com](mailto:Proteintech-CN@ptglab.com)

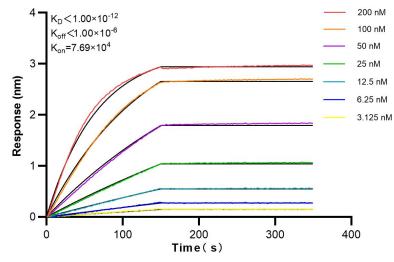
W: [ptgcn.com](http://ptgcn.com)

**This product is exclusively available under Proteintech Group brand and is not available to purchase from any other manufacturer.**

## Selected Validation Data



Various lysates were subjected to SDS PAGE followed by western blot with 84320-2-RR (C14orf133 antibody) at dilution of 1:20000 incubated at room temperature for 1.5 hours.



Biolayer interferometry (BLI) kinetic assays of 84320-2-RR against Human VIPAS39 were performed. The affinity constant is below 1 pM.