

For Research Use Only

# CLUH Recombinant antibody, PBS Only

Catalog Number: 84321-3-PBS



## Basic Information

<b>Catalog Number:</b> 84321-3-PBS	<b>GenBank Accession Number:</b> BC156940	<b>Purification Method:</b> Protein A purification
<b>Size:</b> 1 mg/ml	<b>GeneID (NCBI):</b> 23277	<b>CloneNo.:</b> 241640C1
<b>Source:</b> Rabbit	<b>UNIPROT ID:</b> O75153	
<b>Isotype:</b> IgG	<b>Full Name:</b> KIAA0664	
<b>Immunogen Catalog Number:</b> AG34275	<b>Observed MW:</b> 147-150 kDa	

## Applications

**Tested Applications:**  
WB, Indirect ELISA

**Species Specificity:**  
human, mouse

## Background Information

Clustered mitochondria homolog (CLUH) is a conserved RNA-binding protein, that binds transcripts encoding proteins involved in the respiratory chain, the tricarboxylic acid (TCA) cycle, and other mitochondrial metabolic pathways. Upon loss of CLUH, target mRNAs are subjected to faster decay, and their respective proteins are decreased in abundance. This leads to alterations in mitochondrial distribution (mitochondrial clustering as the gene name alludes to) mitochondrial cristae integrity, respiratory defects, loss of mtDNA, and decreased activity of TCA cycle enzymes. (PMID: 3559794)

## Storage

**Storage:**  
Store at -80°C.  
**The product is shipped with ice packs. Upon receipt, store it immediately at -80°C**

**Storage Buffer:**  
PBS Only

For technical support and original validation data for this product please contact:

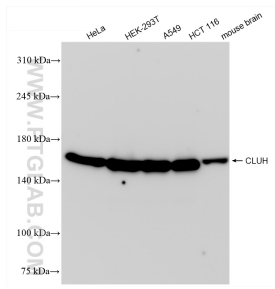
T: 4006900926

E: [Proteintech-CN@ptglab.com](mailto:Proteintech-CN@ptglab.com)

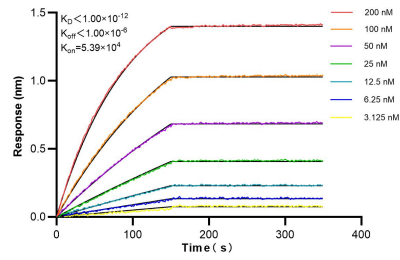
W: [ptgcn.com](http://ptgcn.com)

**This product is exclusively available under Proteintech Group brand and is not available to purchase from any other manufacturer.**

## Selected Validation Data



Various lysates were subjected to SDS PAGE followed by western blot with 84321-3-RR (CLUH antibody) at dilution of 1:10000 incubated at room temperature for 1.5 hours. This data was developed using the same antibody clone with 84321-3-PBS in a different storage buffer formulation.



Biolayer interferometry (BLI) kinetic assays of 84321-3-RR against Human CLUH were performed. The affinity constant is below 1 pM.