

For Research Use Only

# CLUH Recombinant antibody

Catalog Number: 84321-4-RR



## Basic Information

Catalog Number:

84321-4-RR

Size:

1000  $\mu$ g/ml

Source:

Rabbit

Isotype:

IgG

Immunogen Catalog Number:

AG34275

GenBank Accession Number:

BC156940

GeneID (NCBI):

23277

UNIPROT ID:

O75153

Full Name:

KIAA0664

Purification Method:

Protein A purification

CloneNo.:

241640C11

Recommended Dilutions:

IF/ICC 1:125-1:500

## Applications

Tested Applications:

IF/ICC, ELISA

Species Specificity:

human

Positive Controls:

IF/ICC : HeLa cells,

## Background Information

Clustered mitochondria homolog (CLUH) is a conserved RNA-binding protein, that binds transcripts encoding proteins involved in the respiratory chain, the tricarboxylic acid (TCA) cycle, and other mitochondrial metabolic pathways. Upon loss of CLUH, target mRNAs are subjected to faster decay, and their respective proteins are decreased in abundance. This leads to alterations in mitochondrial distribution (mitochondrial clustering as the gene name alludes to) mitochondrial cristae integrity, respiratory defects, loss of mtDNA, and decreased activity of TCA cycle enzymes. (PMID: 35559794)

## Storage

Storage:

Store at -20°C. Stable for one year after shipment.

Storage Buffer:

PBS with 0.02% sodium azide and 50% glycerol pH 7.3.

Aliquoting is unnecessary for -20°C storage

For technical support and original validation data for this product please contact:

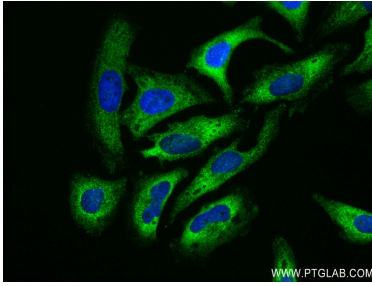
T: 4006900926

E: [Proteintech-CN@ptglab.com](mailto:Proteintech-CN@ptglab.com)

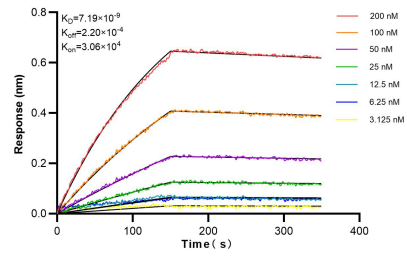
W: [ptgcn.com](http://ptgcn.com)

This product is exclusively available under Proteintech Group brand and is not available to purchase from any other manufacturer.

## Selected Validation Data



Immunofluorescent analysis of (4% PFA) fixed HeLa cells using CLUH antibody (84321-4-RR, Clone: 241640C11) at dilution of 1:250 and CoraLite®488-Conjugated Goat Anti-Rabbit IgG(H+L) (SA00013-2).



Biolayer interferometry (BLI) kinetic assays of 84321-4-RR against Human CLUH were performed. The affinity constant is 7.19 nM.