

For Research Use Only

# MTMR4 Recombinant antibody, PBS Only

Catalog Number: 84328-1-PBS

Featured Product



## Basic Information

<b>Catalog Number:</b> 84328-1-PBS	<b>GenBank Accession Number:</b> BC035609	<b>Purification Method:</b> Protein A purification
<b>Concentration:</b> 1 mg/ml	<b>GeneID (NCBI):</b> 9110	<b>CloneNo.:</b> 241304E11
<b>Source:</b> Rabbit	<b>UNIPROT ID:</b> Q9NYA4	
<b>Isotype:</b> IgG	<b>Full Name:</b> myotubularin related protein 4	
<b>Immunogen Catalog Number:</b> AG4310	<b>Calculated MW:</b> 1195 aa, 133 kDa	
	<b>Observed MW:</b> 160-170 kDa	

## Applications

**Tested Applications:**  
WB, IF/ICC, Indirect ELISA

**Species Specificity:**  
human

## Background Information

Myotubularin-related protein-4 (MTMR4), also named FYVE-DSP2, is a member of the myotubularin family of phosphoinositide phosphatases that selectively degrade the 3-position phosphate from the inositol ring of PtdIns(3)P and phosphatidylinositol 3,5-bisphosphate (PtdIns(3,5)P<sub>2</sub>) (PMID: 31543504). MTMR4 knockdown markedly suppressed the motility, fusion, and fission of PI(3)P-enriched structures, resulting in decreases in late endosomes, autophagosomes, and lysosomes, and enlargement of PI(3)P-enriched early and late endosomes (PMID: 29962048). MTMR4 is an intracellular protein with a calculated molecular mass of 133 kDa, and detected molecular weight in the papers is about 160-170 kDa, which may be due to post-translational modification (PMID: 19125695, PMID: 20736309).

## Storage

**Storage:**  
Store at -80°C.  
**The product is shipped with ice packs. Upon receipt, store it immediately at -80°C**

**Storage Buffer:**  
PBS Only

For technical support and original validation data for this product please contact:

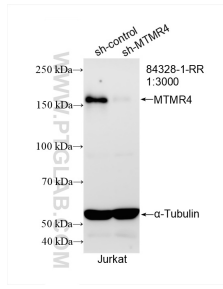
T: 4006900926

E: Proteintech-CN@ptglab.com

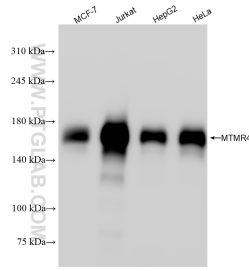
W: ptgcn.com

**This product is exclusively available under Proteintech Group brand and is not available to purchase from any other manufacturer.**

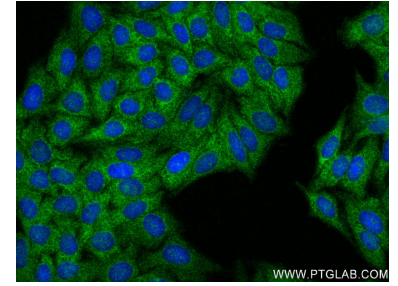
## Selected Validation Data



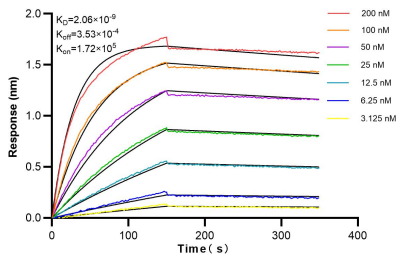
WB result of MTMR4 antibody (84328-1-RR; 1:3000; incubated at room temperature for 1.5 hours) with sh-Control and sh-MTMR4 transfected Jurkat cells. This data was developed using the same antibody clone with 84328-1-PBS in a different storage buffer formulation.



Various lysates were subjected to SDS PAGE followed by western blot with 84328-1-RR (MTMR4 antibody) at dilution of 1:1000 incubated at room temperature for 1.5 hours. This data was developed using the same antibody clone with 84328-1-PBS in a different storage buffer formulation.



Immunofluorescent analysis of (-20°C Ethanol) fixed HepG2 cells using MTMR4 antibody (84328-1-RR, Clone: 241304E11 ) at dilution of 1:250 and CoraLite@488-Conjugated Goat Anti-Rabbit IgG(H+L) (SA00013-2). This data was developed using the same antibody clone with 84328-1-PBS in a different storage buffer formulation.



Biolayer interferometry (BLI) kinetic assays of 84328-1-RR against Human MTMR4 were performed. The affinity constant is 2.06 nM.