

For Research Use Only

BST1 Recombinant antibody, PBS Only (Detector)

Catalog Number: 84333-5-PBS



Basic Information

Catalog Number:

84333-5-PBS

Size:

1 mg/ml

Source:

Rabbit

Isotype:

IgG

GenBank Accession Number:

BC012095

GeneID (NCBI):

683

UNIPROT ID:

Q10588

Full Name:

bone marrow stromal cell antigen 1

Calculated MW:

318 aa, 36 kDa

Purification Method:

Protein A purification

CloneNo.:

241424A2

Applications

Tested Applications:

Sandwich ELISA, Indirect ELISA, Sample test

Species Specificity:

human

Background Information

Storage

Storage:

Store at -80°C.

The product is shipped with ice packs. Upon receipt, store it immediately at -80°C

Storage Buffer:

PBS Only

For technical support and original validation data for this product please contact:

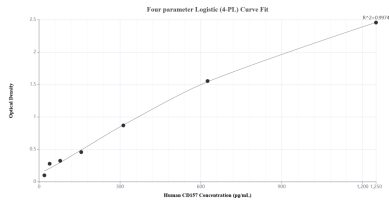
T: 4006900926

E: Proteintech-CN@ptglab.com

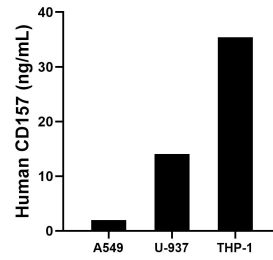
W: ptgcn.com

This product is exclusively available under Proteintech Group brand and is not available to purchase from any other manufacturer.

Selected Validation Data



Sandwich ELISA standard curve of MP01225-4, Human CD157 Recombinant Matched Antibody Pair - PBS only. 84333-1-PBS was coated to a plate as the capture antibody and incubated with serial dilutions of standard RPO2348. 84333-5-PBS was HRP conjugated as the detection antibody. Range: 19.5-1250 pg/mL.



The mean CD157 concentration was determined to be 2.0 ng/mL in A549 cell extract based on a 1.0 mg/mL extract load, 14.0 ng/mL in U-937 cell extract based on a 5.4 mg/mL extract load and 35.4 ng/mL in THP-1 cell extract based on a 1.2 mg/mL extract load.