

For Research Use Only

ZNF148 Recombinant antibody, PBS Only (Capture)

Catalog Number:84338-1-PBS



Basic Information

Catalog Number:

84338-1-PBS

Size:

1 mg/ml

Source:

Rabbit

Isotype:

IgG

Immunogen Catalog Number:

AG35742

GenBank Accession Number:

BC035591

GeneID (NCBI):

7707

UNIPROT ID:

Q9UQR1

Full Name:

zinc finger protein 148

Purification Method:

Protein A purification

CloneNo.:

241632D5

Applications

Tested Applications:

Cytometric bead array, Sandwich ELISA, Indirect ELISA,
Sample test

Species Specificity:

human

Background Information

Storage

Storage:

Store at -80°C.

The product is shipped with ice packs. Upon receipt, store it immediately at -80°C

Storage Buffer:

PBS Only

For technical support and original validation data for this product please contact:

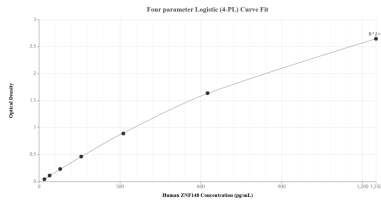
T: 4006900926

E: Proteintech-CN@ptglab.com

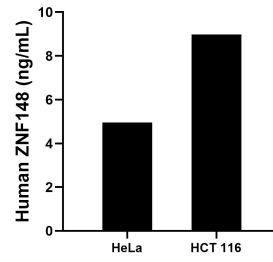
W: ptgcn.com

This product is exclusively available under Proteintech Group brand and is not available to purchase from any other manufacturer.

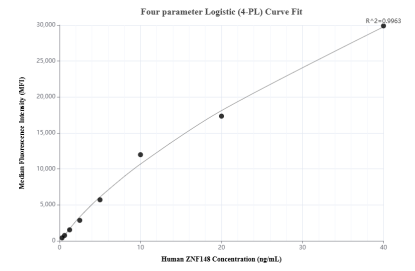
Selected Validation Data



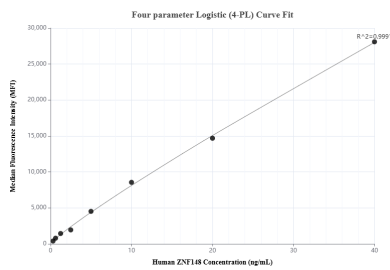
Sandwich ELISA standard curve of MP01253-1, Human ZNF148 Recombinant Matched Antibody Pair - PBS only. 84338-1-PBS was coated to a plate as the capture antibody and incubated with serial dilutions of standard Ag35742. 84338-2-PBS was HRP conjugated as the detection antibody. Range: 19.5-1250 pg/mL



The mean ZNF148 concentration was determined to be 5.0 ng/mL in HeLa cell extract based on a 1.3 mg/mL extract load and 9.0 ng/mL in HCT 116 cell extract based on a 4.3 mg/mL extract load.



Cytometric bead array standard curve of MP01253-1, ZNF148 Recombinant Matched Antibody Pair, PBS Only. Capture antibody: 84338-1-PBS. Detection antibody: 84338-2-PBS. Standard: Ag35742. Range: 0.313-40 ng/mL



Cytometric bead array standard curve of MP01253-2, ZNF148 Recombinant Matched Antibody Pair, PBS Only. Capture antibody: 84338-1-PBS. Detection antibody: 84338-3-PBS. Standard: Ag35742. Range: 0.313-40 ng/mL