

For Research Use Only

ZNF148 Recombinant antibody, PBS Only (Detector)

Catalog Number: 84338-2-PBS



Basic Information

Catalog Number: 84338-2-PBS	GenBank Accession Number: BC035591	Purification Method: Protein A purification
Size: 1 mg/ml	GeneID (NCBI): 7707	CloneNo.: 241632F10
Source: Rabbit	UNIPROT ID: Q9UQR1	
Isotype: IgG	Full Name: zinc finger protein 148	
Immunogen Catalog Number: AG35742		

Applications

Tested Applications:
Cytometric bead array, Sandwich ELISA, Indirect ELISA, Sample test

Species Specificity:
human

Background Information

Storage

Storage:
Store at -80°C.
The product is shipped with ice packs. Upon receipt, store it immediately at -80°C

Storage Buffer:
PBS Only

For technical support and original validation data for this product please contact:

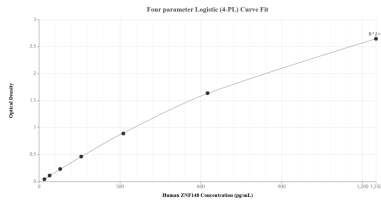
T: 4006900926

E: Proteintech-CN@ptglab.com

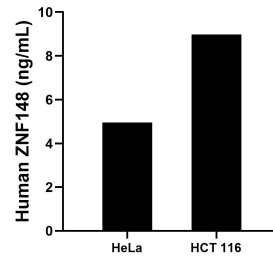
W: ptgcn.com

This product is exclusively available under Proteintech Group brand and is not available to purchase from any other manufacturer.

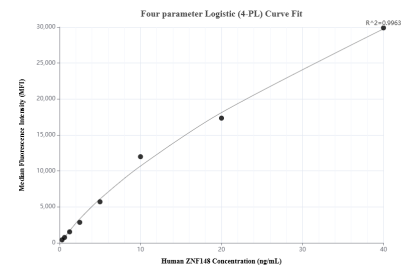
Selected Validation Data



Sandwich ELISA standard curve of MP01253-1, Human ZNF148 Recombinant Matched Antibody Pair - PBS only. 84338-1-PBS was coated to a plate as the capture antibody and incubated with serial dilutions of standard Ag35742. 84338-2-PBS was HRP conjugated as the detection antibody. Range: 19.5-1250 pg/mL



The mean ZNF148 concentration was determined to be 5.0 ng/mL in HeLa cell extract based on a 1.3 mg/mL extract load and 9.0 ng/mL in HCT 116 cell extract based on a 4.3 mg/mL extract load.



Cytometric bead array standard curve of MP01253-1, ZNF148 Recombinant Matched Antibody Pair, PBS Only. Capture antibody: 84338-1-PBS. Detection antibody: 84338-2-PBS. Standard: Ag35742. Range: 0.313-40 ng/mL