

For Research Use Only

CD33 Recombinant antibody, PBS Only (Capture)

Catalog Number: 84341-2-PBS



Basic Information

Catalog Number:

84341-2-PBS

Size:

1 mg/ml

Source:

Rabbit

Isotype:

IgG

GenBank Accession Number:

BC028152

GeneID (NCBI):

945

UNIPROT ID:

P20138

Full Name:

CD33 molecule

Calculated MW:

364 aa, 40 kDa

Purification Method:

Protein A purification

CloneNo.:

241711C12

Applications

Tested Applications:

Cytometric bead array, Sandwich ELISA, Indirect ELISA,
Sample test

Species Specificity:

human

Background Information

Storage

Storage:

Store at -80°C.

The product is shipped with ice packs. Upon receipt, store it immediately at -80°C

Storage Buffer:

PBS Only

For technical support and original validation data for this product please contact:

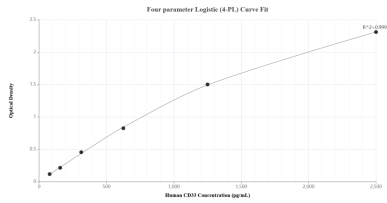
T: 4006900926

E: Proteintech-CN@ptglab.com

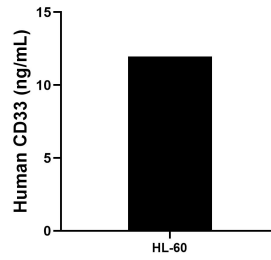
W: ptgcn.com

This product is exclusively available under Proteintech Group brand and is not available to purchase from any other manufacturer.

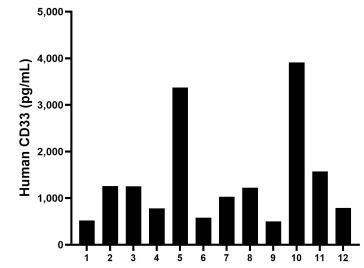
Selected Validation Data



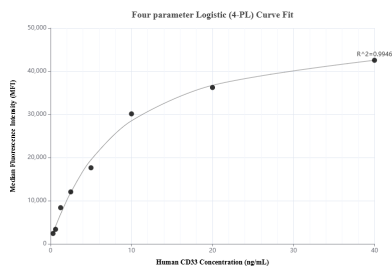
Sandwich ELISA standard curve of MP01254-1, Human CD33 Recombinant Matched Antibody Pair - PBS only. 84341-2-PBS was coated to a plate as the capture antibody and incubated with serial dilutions of standard Eg2138. 84341-1-PBS was HRP conjugated as the detection antibody. Range: 78.1-2500 pg/mL



The mean CD33 concentration was determined to be 12.0 ng/mL in HL-60 cell extract based on a 1.4 mg/mL extract load.



Serum of twelve individual healthy human donors was measured. The CD33 concentration of detected samples was determined to be 1,399.3 pg/mL with a range of 520.6-3,913.4 pg/mL



Cytometric bead array standard curve of MP01254-1, CD33 Recombinant Matched Antibody Pair, PBS Only. Capture antibody: 84341-2-PBS. Detection antibody: 84341-1-PBS. Standard: Eg2138. Range: 0.313-40 ng/mL