

For Research Use Only

# Somatostatin Recombinant antibody, PBS Only

Catalog Number: 84351-1-PBS



## Basic Information

Catalog Number:

84351-1-PBS

Size:

1000 µg/ml

Source:

Rabbit

Isotype:

IgG

GenBank Accession Number:

NM\_001048

GeneID (NCBI):

6750

UNIPROT ID:

P61278

Full Name:

somatostatin

Calculated MW:

13 kDa

Purification Method:

Protein A purification

CloneNo.:

240816D9

Recommended Dilutions:

IHC 1:20000-1:80000

## Applications

Tested Applications:

IHC, IF-P, Indirect ELISA

Species Specificity:

human, mouse

**Note-IHC: suggested antigen retrieval with TE buffer pH 9.0; (\*) Alternatively, antigen retrieval may be performed with citrate buffer pH 6.0**

Positive Controls:

IHC : mouse pancreas tissue,

## Background Information

Somatostatin is a peptide hormone that regulates the endocrine system and affects neurotransmission and cell proliferation via interaction with G protein-coupled somatostatin receptors and inhibition of the release of numerous secondary hormones. Somatostatin is a useful marker of D-cells of pancreatic islet cells. Somatostatin inhibits insulin and glucagon secretion. Somatostatin has two active forms produced by alternative cleavage of a single preproprotein: one of 14 amino acids, the other of 28 amino acids.

## Storage

Storage:

Store at -80°C.

**The product is shipped with ice packs. Upon receipt, store it immediately at -80°C**

Storage Buffer:

PBS Only

For technical support and original validation data for this product please contact:

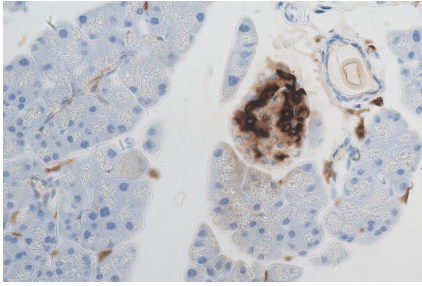
T: 4006900926

E: Proteintech-CN@ptglab.com

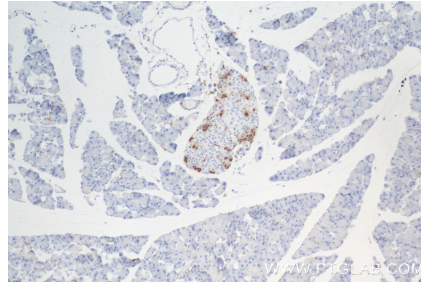
W: ptgcn.com

**This product is exclusively available under Proteintech Group brand and is not available to purchase from any other manufacturer.**

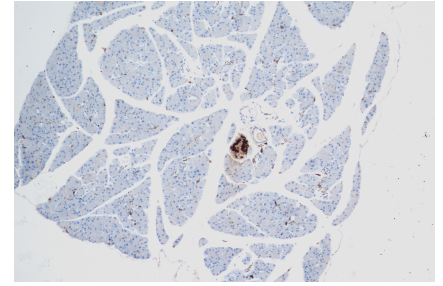
## Selected Validation Data



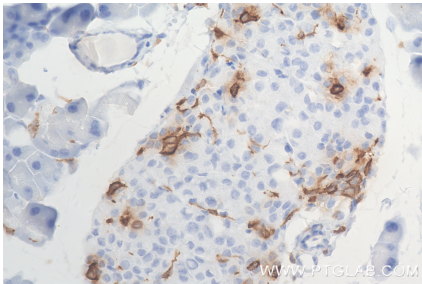
Immunohistochemical analysis of paraffin-embedded mouse pancreas tissue slide using 84351-1-RR (SST-Specific antibody) at dilution of 1:10000 (under 40x lens). Heat mediated antigen retrieval with Tris-EDTA buffer (pH 9.0). This data was developed using the same antibody clone with 84351-1-PBS in a different storage buffer formulation.



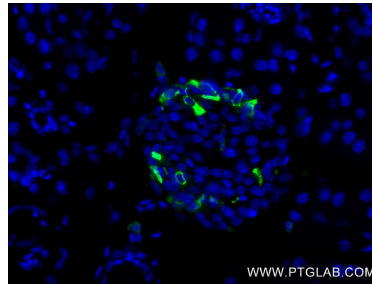
Immunohistochemical analysis of paraffin-embedded mouse pancreas tissue slide using 84351-1-PBS (Somatostatin antibody) at dilution of 1:40000 (under 10x lens). Heat mediated antigen retrieval with Tris-EDTA buffer (pH 9.0).



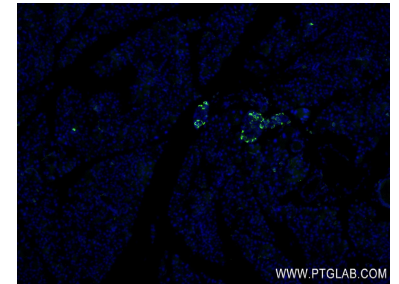
Immunohistochemical analysis of paraffin-embedded mouse pancreas tissue slide using 84351-1-RR (SST-Specific antibody) at dilution of 1:10000 (under 10x lens). Heat mediated antigen retrieval with Tris-EDTA buffer (pH 9.0). This data was developed using the same antibody clone with 84351-1-PBS in a different storage buffer formulation.



Immunohistochemical analysis of paraffin-embedded mouse pancreas tissue slide using 84351-1-PBS (Somatostatin antibody) at dilution of 1:40000 (under 40x lens). Heat mediated antigen retrieval with Tris-EDTA buffer (pH 9.0).



Immunofluorescent analysis of (4% PFA) fixed paraffin-embedded mouse pancreas tissue using Somatostatin antibody (84351-1-RR, Clone: 240816D9) at dilution of 1:400 and CoraLite® 488-Conjugated Goat Anti-Rabbit IgG(H+L) (SA00013-2). Heat mediated antigen retrieval with Tris-EDTA buffer (pH 9.0). This data was developed using the same antibody clone with 84351-1-PBS in a different storage buffer formulation.



Immunofluorescent analysis of (4% PFA) fixed paraffin-embedded mouse pancreas tissue using Somatostatin antibody (84351-1-RR, Clone: 240816D9) at dilution of 1:400 and CoraLite® 488-Conjugated Goat Anti-Rabbit IgG(H+L) (SA00013-2). Heat mediated antigen retrieval with Tris-EDTA buffer (pH 9.0). This data was developed using the same antibody clone with 84351-1-PBS in a different storage buffer formulation.