

For Research Use Only

# POLR2A Recombinant antibody

Catalog Number: 84357-1-RR



## Basic Information

<b>Catalog Number:</b> 84357-1-RR	<b>GenBank Accession Number:</b> NM_000937	<b>Purification Method:</b> Protein A purification
<b>Size:</b> 500 ug/ml	<b>GeneID (NCBI):</b> 5430	<b>CloneNo.:</b> 240869E9
<b>Source:</b> Rabbit	<b>UNIPROT ID:</b> P24928	<b>Recommended Dilutions:</b> WB 1:1000-1:4000 IHC 1:50-1:500 IF/ICC 1:125-1:500
<b>Isotype:</b> IgG	<b>Full Name:</b> polymerase (RNA) II (DNA directed) polypeptide A, 220kDa	
	<b>Calculated MW:</b> 217 kDa	
	<b>Observed MW:</b> 245 kDa	

## Applications

**Tested Applications:**  
WB, IHC, IF/ICC, ELISA

**Species Specificity:**  
human, monkey

**Note-IHC: suggested antigen retrieval with TE buffer pH 9.0; (\*) Alternatively, antigen retrieval may be performed with citrate buffer pH 6.0**

**Positive Controls:**

WB : COS-7 cells,

IHC : mouse pancreas tissue,

IF/ICC : HepG2 cells,

## Background Information

DNA-directed RNA polymerase II subunit RPB1(POLR2A), is part of the core element of the basic RNA polymerase II transcription mechanism. During transcription elongation, Pol II moves on the template as the transcript elongates. Elongation is influenced by the phosphorylation status of the C-terminal domain (CTD) of Pol II largest subunit (RPB1), which serves as a platform for the assembly of factors that regulate transcription initiation, elongation, termination, and mRNA processing.

## Storage

**Storage:**

Store at -20°C. Stable for one year after shipment.

**Storage Buffer:**

PBS with 0.02% sodium azide and 50% glycerol pH 7.3.

Aliquoting is unnecessary for -20°C storage

For technical support and original validation data for this product please contact:

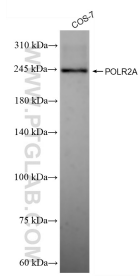
T: 4006900926

E: Proteintech-CN@ptglab.com

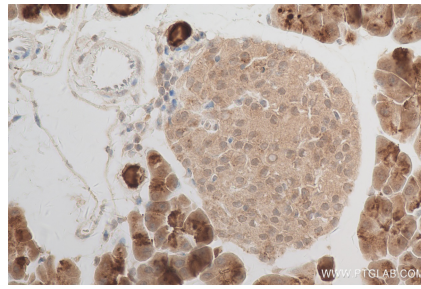
W: ptgcn.com

**This product is exclusively available under Proteintech Group brand and is not available to purchase from any other manufacturer.**

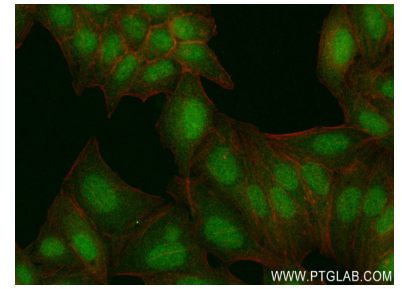
## Selected Validation Data



COS-7 cells were subjected to SDS PAGE followed by western blot with 84357-1-RR (POLR2A antibody) at dilution of 1:2000 incubated at room temperature for 1.5 hours.



Immunohistochemical analysis of paraffin-embedded mouse pancreas tissue slide using 84357-1-RR (POLR2A antibody) at dilution of 1:200 (under 40x lens). Heat mediated antigen retrieval with Tris-EDTA buffer (pH 9.0).



Immunofluorescent analysis of (4% PFA) fixed HepG2 cells using POLR2A antibody (84357-1-RR, Clone: 240869E9) at dilution of 1:250 and CoraLite® 488-Conjugated Goat Anti-Rabbit IgG(H+L) (SA00013-2), CL594-Phalloidin (red).