

For Research Use Only

ZNF638 Recombinant antibody

Catalog Number: 84359-3-RR



Basic Information

Catalog Number:

84359-3-RR

Size:

1000 µg/ml

Source:

Rabbit

Isotype:

IgG

Immunogen Catalog Number:

AG35296

GenBank Accession Number:

NM_014497.4

GeneID (NCBI):

27332

UNIPROT ID:

Q14966

Full Name:

zinc finger protein 638

Calculated MW:

221kDa

Observed MW:

270-300 kDa

Purification Method:

Protein A purification

CloneNo.:

241636C9

Recommended Dilutions:

WB 1:5000-1:50000

IF/ICC 1:200-1:800

Applications

Tested Applications:

WB, IF/ICC, ELISA

Species Specificity:

human

Positive Controls:

WB : HEK-293T cells, Jurkat cells, HepG2 cells, HeLa cells, A431 cells

IF/ICC : HepG2 cells,

Background Information

ZNF638 (Zinc finger protein 638) is also named as NP220 and ZFML. ZNF638 is a newly discovered member of zinc finger protein family for adipocyte function in vitro. And ZNF638 regulates triglyceride metabolism via ANGPTL8 in an estrogen dependent manner (PMID: 38211696). ZNF638 plays a role as a transcriptional coregulator of adipocyte differentiation via induction of PPAR γ in cooperation with CCAAT/enhancer binding proteins (C/EBPs) (PMID: 25024404). ZNF638 is localized in nuclear bodies enriched with splicing factors (PMID: 25024404).

Storage

Storage:

Store at -20°C. Stable for one year after shipment.

Storage Buffer:

PBS with 0.02% sodium azide and 50% glycerol pH 7.3.

Aliquoting is unnecessary for -20°C storage

For technical support and original validation data for this product please contact:

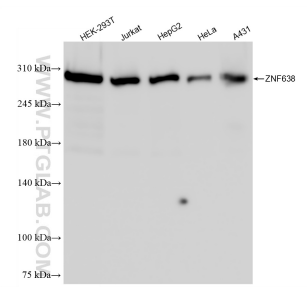
T: 4006900926

E: Proteintech-CN@ptglab.com

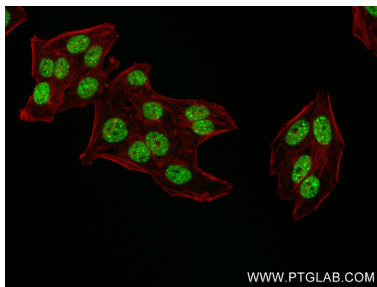
W: ptgcn.com

This product is exclusively available under Proteintech Group brand and is not available to purchase from any other manufacturer.

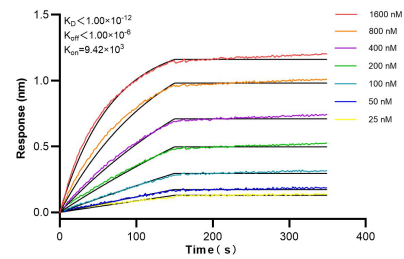
Selected Validation Data



Various lysates were subjected to SDS PAGE followed by western blot with 84359-3-RR (ZNF638 antibody) at dilution of 1:10000 incubated at room temperature for 1.5 hours.



Immunofluorescent analysis of (4% PFA) fixed HepG2 cells using ZNF638 antibody (84359-3-RR, Clone: 241636C9) at dilution of 1:400 and CoraLite®488-Conjugated Goat Anti-Rabbit IgG(H+L) (SA00013-2), CL594-Phalloidin (red).



Biolayer interferometry (BLI) kinetic assays of 84359-3-RR against Human ZNF638 were performed. The affinity constant is below 1 pM.