

For Research Use Only

Placental lactogen Recombinant antibody, PBS Only (Capture/Detector)

Catalog Number: 84361-2-PBS



Basic Information

Catalog Number:

84361-2-PBS

Size:

1 mg/ml

Source:

Rabbit

Isotype:

IgG

Immunogen Catalog Number:

AG0201

GenBank Accession Number:

BC002717

GeneID (NCBI):

1442

UNIPROT ID:

PODML2

Full Name:

chorionic somatomammotropin hormone 1 (placental lactogen)

Calculated MW:

25 kDa

Observed MW:

20-25 kDa

Purification Method:

Protein A purification

CloneNo.:

241625E1

Applications

Tested Applications:

WB, Cytometric bead array, Indirect ELISA

Species Specificity:

human

Background Information

Chorionic somatomammotropin hormone 1 (placental lactogen, CSH1), is a hormone with the molecular weight of 25 kDa. The data suggest that this protein may link with the Silver-Russell syndrome (SRS), a disease of pre- and postnatal growth restriction and a characteristic small, triangular face. SRS is also accompanied by other dysmorphic features including fifth finger clinodactyly and skeletal asymmetry.

Storage

Storage:

Store at -80°C.

The product is shipped with ice packs. Upon receipt, store it immediately at -80°C

Storage Buffer:

PBS Only

For technical support and original validation data for this product please contact:

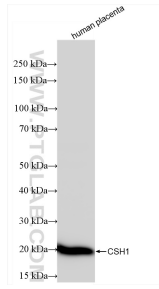
T: 4006900926

E: Proteintech-CN@ptglab.com

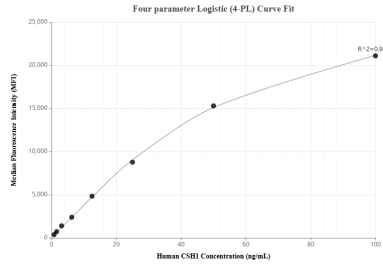
W: ptgcn.com

This product is exclusively available under Proteintech Group brand and is not available to purchase from any other manufacturer.

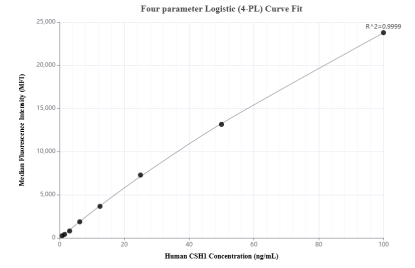
Selected Validation Data



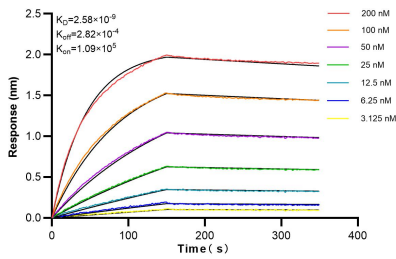
human placenta tissue were subjected to SDS PAGE followed by western blot with 84361-2-RR (CSH1 antibody) at dilution of 1:10000 incubated at room temperature for 1.5 hours. This data was developed using the same antibody clone with 84361-2-PBS in a different storage buffer formulation.



Cytometric bead array standard curve of MP01252-1, CSH1 Recombinant Matched Antibody Pair, PBS Only. Capture antibody: 84361-2-PBS. Detection antibody: 84361-1-PBS. Standard: Ag0201. Range: 0.781-100 ng/mL



Cytometric bead array standard curve of MP01252-2, CSH1 Recombinant Matched Antibody Pair, PBS Only. Capture antibody: 84361-4-PBS. Detection antibody: 84361-2-PBS. Standard: Ag0201. Range: 0.781-100 ng/mL



Bi-layer interferometry (BLI) kinetic assays of 84361-2-RR against Human Placental lactogen were performed. The affinity constant is 2.58 nM.