

For Research Use Only

# Placental lactogen Recombinant antibody

Catalog Number: 84361-2-RR



## Basic Information

Catalog Number:

84361-2-RR

Size:

1000 µg/ml

Source:

Rabbit

Isotype:

IgG

Immunogen Catalog Number:

AG0201

GenBank Accession Number:

BC002717

GeneID (NCBI):

1442

UNIPROT ID:

PODML2

Full Name:

chorionic somatomammotropin hormone 1 (placental lactogen)

Calculated MW:

25 kDa

Observed MW:

20-25 kDa

Purification Method:

Protein A purification

CloneNo.:

241625E1

Recommended Dilutions:

WB 1:5000-1:50000

## Applications

Tested Applications:

WB, ELISA

Species Specificity:

human

Positive Controls:

WB : human placenta tissue,

## Background Information

Chorionic somatomammotropin hormone 1 (placental lactogen, CSH1), is a hormone with the molecular weight of 25 kDa. The data suggest that this protein may link with the Silver-Russell syndrome (SRS), a disease of pre- and postnatal growth restriction and a characteristic small, triangular face. SRS is also accompanied by other dysmorphic features including fifth finger clinodactyly and skeletal asymmetry.

## Storage

Storage:

Store at -20°C. Stable for one year after shipment.

Storage Buffer:

PBS with 0.02% sodium azide and 50% glycerol pH 7.3.

Aliquoting is unnecessary for -20°C storage

For technical support and original validation data for this product please contact:

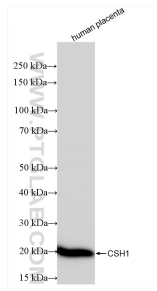
T: 4006900926

E: [Proteintech-CN@ptglab.com](mailto:Proteintech-CN@ptglab.com)

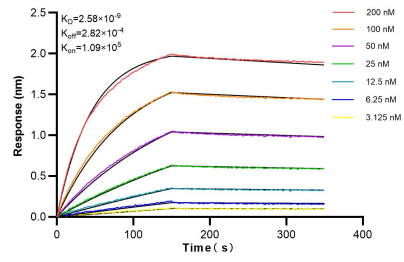
W: [ptgcn.com](http://ptgcn.com)

This product is exclusively available under Proteintech Group brand and is not available to purchase from any other manufacturer.

## Selected Validation Data



human placenta tissue were subjected to SDS PAGE followed by western blot with 84361-2-RR (CSH1 antibody) at dilution of 1:10000 incubated at room temperature for 1.5 hours.



Biolayer interferometry (BLI) kinetic assays of 84361-2-RR against Human Placental lactogen were performed. The affinity constant is 2.58 nM.