

For Research Use Only

Kindlin 2 Recombinant antibody, PBS Only (Capture)

Catalog Number:84362-2-PBS



Basic Information

Catalog Number: 84362-2-PBS	GenBank Accession Number: BC017327	Purification Method: Protein A purification
Size: 1 mg/ml	GeneID (NCBI): 10979	CloneNo.: 241665B4
Source: Rabbit	UNIPROT ID: Q96AC1	
Isotype: IgG	Full Name: fermitin family homolog 2 (Drosophila)	
Immunogen Catalog Number: AG33840	Calculated MW: 680 aa, 78 kDa	

Applications

Tested Applications:
Cytometric bead array, Sandwich ELISA, Indirect ELISA,
Sample test

Species Specificity:
human

Background Information

Storage

Storage:
Store at -80°C.
The product is shipped with ice packs. Upon receipt, store it immediately at -80°C

Storage Buffer:
PBS Only

For technical support and original validation data for this product please contact:

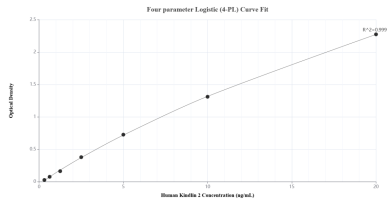
T: 4006900926

E: Proteintech-CN@ptglab.com

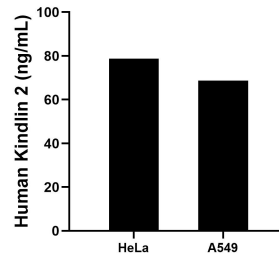
W: ptgcn.com

This product is exclusively available under Proteintech Group brand and is not available to purchase from any other manufacturer.

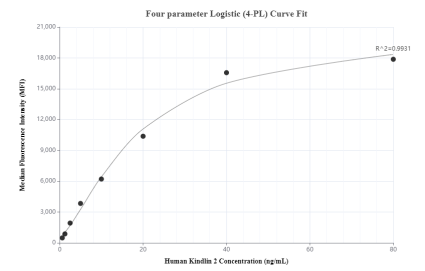
Selected Validation Data



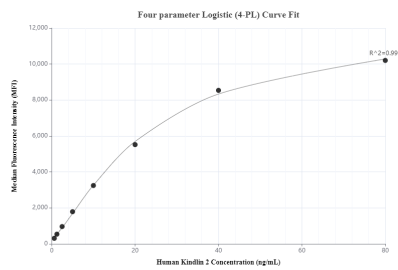
Sandwich ELISA standard curve of MP01239-1, Human Kindlin 2 Recombinant Matched Antibody Pair - PBS only. 84362-2-PBS was coated to a plate as the capture antibody and incubated with serial dilutions of standard Ag33840. 84362-1-PBS was HRP conjugated as the detection antibody. Range: 0.313-20 ng/mL



The mean Kindlin 2 concentration was determined to be 78.81 ng/mL in HeLa cell extract based on a 1.50 mg/mL extract load and 68.63 ng/mL in A549 cell extract based on a 2.50 mg/mL extract load.



Cytometric bead array standard curve of MP01239-1, Kindlin 2 Recombinant Matched Antibody Pair, PBS Only. Capture antibody: 84362-2-PBS. Detection antibody: 84362-1-PBS. Standard: Ag33840. Range: 0.625-80 ng/mL



Cytometric bead array standard curve of MP01239-2, Kindlin 2 Recombinant Matched Antibody Pair, PBS Only. Capture antibody: 84362-2-PBS. Detection antibody: 84362-3-PBS. Standard: Ag33840. Range: 0.625-80 ng/mL