

For Research Use Only

# CCL22 Recombinant antibody, PBS Only (Detector)

Catalog Number: 84370-6-PBS



## Basic Information

Catalog Number:

84370-6-PBS

Size:

1 mg/ml

Source:

Rabbit

Isotype:

IgG

GenBank Accession Number:

BC027952

GeneID (NCBI):

6367

UNIPROT ID:

O00626

Full Name:

chemokine (C-C motif) ligand 22

Calculated MW:

93 aa, 11 kDa

Purification Method:

Protein A purification

CloneNo.:

241668E6

## Applications

Tested Applications:

Sandwich ELISA, Indirect ELISA, Sample test

Species Specificity:

human

## Background Information

### Storage

Storage:

Store at -80°C.

The product is shipped with ice packs. Upon receipt, store it immediately at -80°C

Storage Buffer:

PBS Only

For technical support and original validation data for this product please contact:

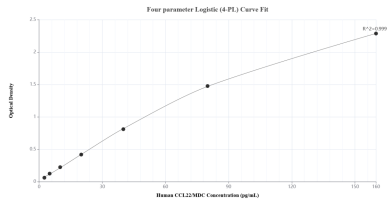
T: 4006900926

E: [Proteintech-CN@ptglab.com](mailto:Proteintech-CN@ptglab.com)

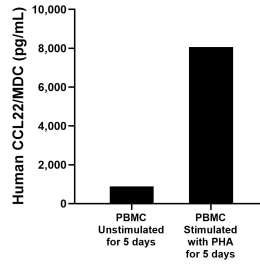
W: [ptgcn.com](http://ptgcn.com)

This product is exclusively available under Proteintech Group brand and is not available to purchase from any other manufacturer.

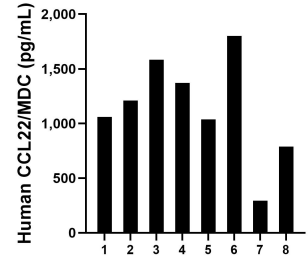
## Selected Validation Data



Sandwich ELISA standard curve of MP01238-4, Human CCL22/MDC Recombinant Matched Antibody Pair - PBS only. 84370-5-PBS was coated to a plate as the capture antibody and incubated with serial dilutions of standard Eg1974. 84370-6-PBS was HRP conjugated as the detection antibody. Range: 2.50-160 pg/mL



Human peripheral blood mononuclear cells (PBMC) were cultured unstimulated or stimulated with 10  $\mu$ g/mL PHA for 5 days. The mean CCL22/MDC concentration was determined to be 884.9 pg/mL in unstimulated PBMC supernatant, 8,063.7 pg/mL in PHA stimulated PBMC supernatant.



Serum of eight individual healthy human donors was measured. The CCL22/MDC concentration of detected samples was determined to be 1,143.1 pg/mL with a range of 293.4-1,800.4 pg/mL.