

For Research Use Only

HAPLN1 Recombinant antibody

Catalog Number:84374-4-RR



Basic Information

Catalog Number:

84374-4-RR

Size:

1000 µg/ml

Source:

Rabbit

Isotype:

IgG

Immunogen Catalog Number:

AG25221

GenBank Accession Number:

BC057808

GeneID (NCBI):

1404

UNIPROT ID:

P10915

Full Name:

hyaluronan and proteoglycan link protein 1

Calculated MW:

40 kDa

Observed MW:

40-45 kDa

Purification Method:

Protein A purification

CloneNo.:

241588E9

Recommended Dilutions:

WB 1:5000-1:50000

Applications

Tested Applications:

WB, ELISA

Species Specificity:

human, mouse, rat

Positive Controls:

WB : mouse brain tissue, rat brain tissue

Background Information

HAPLN1 (hyaluronan and proteoglycan link protein 1), also known as CRTL1. It is expected to be located in the cytoplasm and extracellular, and the protein is mainly expressed in placenta and small intestine. The calculated molecular weight of HAPLN1 is 40 kDa. HAPLN1 binds to aggrecan on the hyaluronic chain, stabilizing the aggregates and thus increasing compression resistance and shock absorption. HAPLN1 also functions as a growth factor, up regulating aggrecan and type II collagen synthesis in cartilage. It seems to be an essential part of cartilage homeostasis and may also contribute to homeostasis in the disc tissue (PMID: 23537453). It is reported in the literature that it is a double band.(PMID: 26341258)

Storage

Storage:

Store at -20°C. Stable for one year after shipment.

Storage Buffer:

PBS with 0.02% sodium azide and 50% glycerol pH 7.3.

Aliquoting is unnecessary for -20°C storage

For technical support and original validation data for this product please contact:

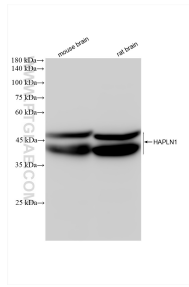
T: 4006900926

E: Proteintech-CN@ptglab.com

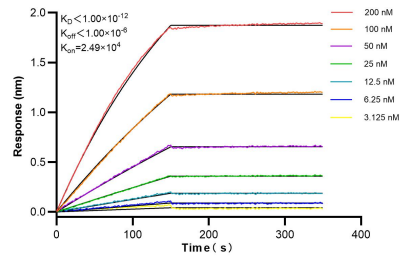
W: ptgcn.com

This product is exclusively available under Proteintech Group brand and is not available to purchase from any other manufacturer.

Selected Validation Data



Various lysates were subjected to SDS PAGE followed by western blot with 84374-4-RR (HAPLN1 antibody) at dilution of 1:10000 incubated at room temperature for 1.5 hours.



Biolayer interferometry (BLI) kinetic assays of 84374-4-RR against Human HAPLN1 were performed. The affinity constant is below 1 pM.