

For Research Use Only

IGF1R Recombinant antibody, PBS Only (Detector)

Catalog Number: 84385-5-PBS



Basic Information

Catalog Number:

84385-5-PBS

Size:

1 mg/ml

Source:

Rabbit

Isotype:

IgG

GenBank Accession Number:

BC113612

GeneID (NCBI):

3480

UNIPROT ID:

P08069

Full Name:

IGF I receptor

Calculated MW:

1367 aa, 155 kDa

Purification Method:

Protein A purification

CloneNo.:

241678A2

Applications

Tested Applications:

Sandwich ELISA, Indirect ELISA, Sample test

Species Specificity:

human

Background Information

Storage

Storage:

Store at -80°C.

The product is shipped with ice packs. Upon receipt, store it immediately at -80°C

Storage Buffer:

PBS Only

For technical support and original validation data for this product please contact:

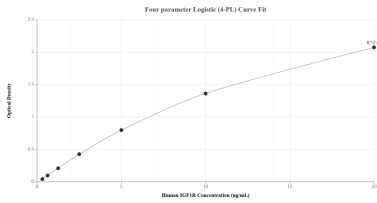
T: 4006900926

E: Proteintech-CN@ptglab.com

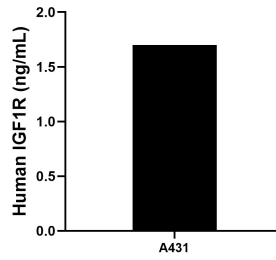
W: ptgcn.com

This product is exclusively available under Proteintech Group brand and is not available to purchase from any other manufacturer.

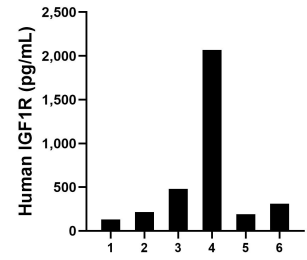
Selected Validation Data



Sandwich ELISA standard curve of MP00869-4, Human IGF1R Recombinant Matched Antibody Pair - PBS only. 84385-2-PBS was coated to a plate as the capture antibody and incubated with serial dilutions of standard RPO0008. 84385-5-PBS was HRP conjugated as the detection antibody. Range: 0.313-20 ng/mL.



The mean IGF1R concentration was determined to be 1.70 ng/mL in A431 cell extract based on a 2.90 mg/mL extract load.



Serum of six individual healthy human donors was measured. The IGF1R concentration of detected samples was determined to be 566.66 pg/mL with a range of 132.19-2,068.11 pg/mL.