

For Research Use Only

# CD98/SLC3A2 Recombinant antibody, PBS Only (Detector)

Catalog Number: 84387-4-PBS



## Basic Information

Catalog Number:

84387-4-PBS

Size:

1 mg/ml

Source:

Rabbit

Isotype:

IgG

GenBank Accession Number:

NM\_002394.5

GeneID (NCBI):

6520

UNIPROT ID:

P08195-1

Full Name:

solute carrier family 3 (activators of dibasic and neutral amino acid transport), member 2

Calculated MW:

68kDa

Purification Method:

Protein A purification

CloneNo.:

241755G8

## Applications

Tested Applications:

Cytometric bead array, Sandwich ELISA, Indirect ELISA, Sample test

Species Specificity:

human

## Background Information

### Storage

Storage:

Store at -80°C.

The product is shipped with ice packs. Upon receipt, store it immediately at -80°C

Storage Buffer:

PBS Only

For technical support and original validation data for this product please contact:

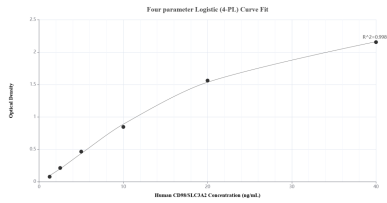
T: 4006900926

E: [Proteintech-CN@ptglab.com](mailto:Proteintech-CN@ptglab.com)

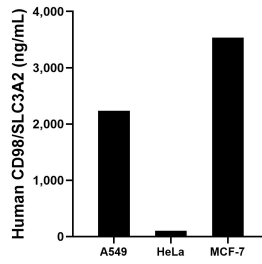
W: [ptgcn.com](http://ptgcn.com)

This product is exclusively available under Proteintech Group brand and is not available to purchase from any other manufacturer.

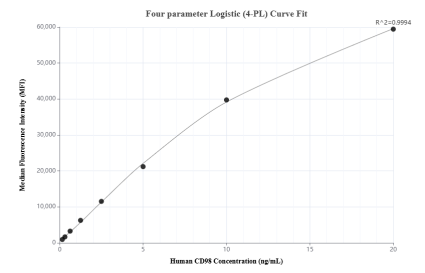
## Selected Validation Data



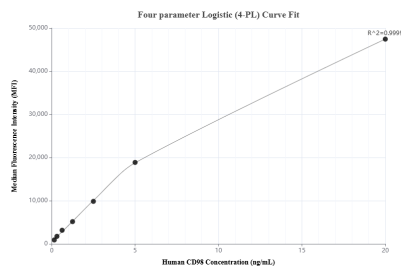
Sandwich ELISA standard curve of MP01259-1, Human CD98/SLC3A2 Recombinant Matched Antibody Pair - PBS only. 84387-3-PBS was coated to a plate as the capture antibody and incubated with serial dilutions of standard Eg1948. 84387-4-PBS was HRP conjugated as the detection antibody. Range: 1.25-40 ng/mL



The mean CD98/SLC3A2 concentration was determined to be 2,237.79 ng/mL in A549 cell extract based on a 2.50 mg/mL extract load, 103.17 ng/mL in HeLa cell extract based on a 2.80 mg/mL extract load and 3,533.79 ng/mL in MCF-7 cell extract based on a 3.20 mg/mL extract load.



Cytometric bead array standard curve of MP01259-1, CD98/SLC3A2 Recombinant Matched Antibody Pair, PBS Only. Capture antibody: 84387-3-PBS. Detection antibody: 84387-4-PBS. Standard: Eg1948. Range: 0.156-20 ng/mL



Cytometric bead array standard curve of MP01259-2, CD98/SLC3A2 Recombinant Matched Antibody Pair, PBS Only. Capture antibody: 84387-1-PBS. Detection antibody: 84387-4-PBS. Standard: Eg1948. Range: 0.156-20 ng/mL