

For Research Use Only

CD122/IL-2RB Recombinant antibody

Catalog Number: 84389-2-RR



Basic Information

Catalog Number:

84389-2-RR

Size:

1000 µg/ml

Source:

Rabbit

Isotype:

IgG

GenBank Accession Number:

BC025691

GeneID (NCBI):

3560

ENSEMBL Gene ID:

ENSG00000100385

UNIPROT ID:

P14784

Full Name:

interleukin 2 receptor, beta

Calculated MW:

551 aa, 61 kDa

Observed MW:

70 kDa

Purification Method:

Protein A purification

CloneNo.:

241677C9

Recommended Dilutions:

WB 1:1000-1:8000

Applications

Tested Applications:

WB, ELISA

Species Specificity:

human

Positive Controls:

WB : NK-92 cells,

Background Information

The interleukin 2 receptor, which is involved in T cell-mediated immune responses, is present in 3 forms with respect to ability to bind interleukin 2. The low affinity form is a monomer of the alpha subunit and is not involved in signal transduction. The intermediate affinity form consists of an alpha/beta subunit heterodimer, while the high affinity form consists of an alpha/beta/gamma subunit heterotrimer. The beta subunit (IL2RB, also known as CD122 and p75) is involved in receptor mediated endocytosis and transduces the mitogenic signals of interleukin 2.

Storage

Storage:

Store at -20°C. Stable for one year after shipment.

Storage Buffer:

PBS with 0.02% sodium azide and 50% glycerol pH 7.3.

Aliquoting is unnecessary for -20°C storage

For technical support and original validation data for this product please contact:

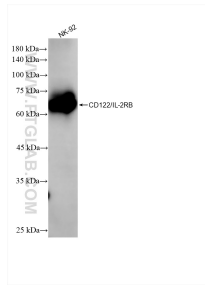
T: 4006900926

E: Proteintech-CN@ptglab.com

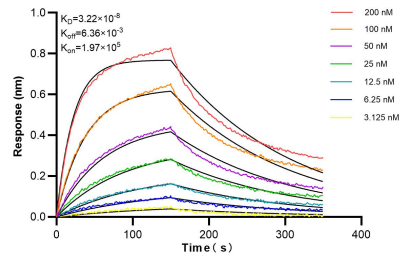
W: ptgcn.com

This product is exclusively available under Proteintech Group brand and is not available to purchase from any other manufacturer.

Selected Validation Data



NK-92 cells were subjected to SDS PAGE followed by western blot with 84389-2-RR (CD122/IL-2RB antibody) at dilution of 1:4000 incubated at room temperature for 1.5 hours.



Biolayer interferometry (BLI) kinetic assays of 84389-2-RR against Human CD122/IL-2RB were performed. The affinity constant is 32.2 nM.