

For Research Use Only

IL-18R1/CD218a Recombinant antibody, PBS Only

Catalog Number: 84390-5-PBS



Basic Information

Catalog Number: 84390-5-PBS	GenBank Accession Number: BC093975	Purification Method: Protein A purification
Size: 1 mg/ml	GeneID (NCBI): 8809	CloneNo.: 241673G6
Source: Rabbit	UNIPROT ID: Q13478	
Isotype: IgG	Full Name: interleukin 18 receptor 1	
	Calculated MW: 541 aa, 62 kDa	
	Observed MW: 60-75 kDa	

Applications

Tested Applications:
WB, IF/ICC, Indirect ELISA

Species Specificity:
human

Background Information

IL-18R1 (CD218a) is a component of the interleukin-18 receptor (IL-18R) complex, which is critical for the signaling of IL-18, a pro-inflammatory cytokine. This receptor complex, consisting of IL-18R1 and the IL-18 receptor accessory protein (IL-18RAP), belongs to the immunoglobulin-like family of interleukin-1 receptors (PMID: 35461924). IL-18R1 plays a significant role in inducing the production of interferon-gamma (IFN- γ) and other inflammatory cytokines, contributing to innate and adaptive immune responses (PMID: 2550053). It is also suggested to play a role in hypertension and chronic kidney disease, where the IL-18/IL-18R1 signaling axis may have diagnostic and therapeutic potential (PMID: 35461924).

Storage

Storage:
Store at -80°C.
The product is shipped with ice packs. Upon receipt, store it immediately at -80°C

Storage Buffer:
PBS Only

For technical support and original validation data for this product please contact:

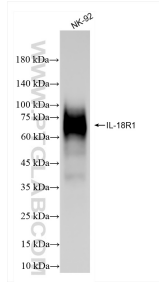
T: 4006900926

E: Proteintech-CN@ptglab.com

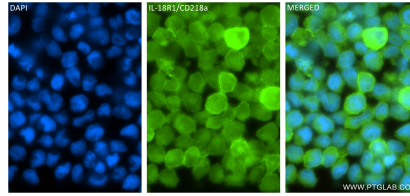
W: ptgcn.com

This product is exclusively available under Proteintech Group brand and is not available to purchase from any other manufacturer.

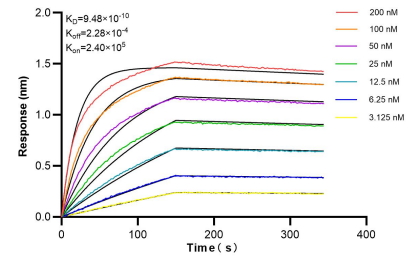
Selected Validation Data



NK-92 cells were subjected to SDS PAGE followed by western blot with 84390-5-RR (IL18R1 antibody) at dilution of 1:1000 incubated at room temperature for 1.5 hours. This data was developed using the same antibody clone with 84390-5-PBS in a different storage buffer formulation.



Immunofluorescent analysis of (4% PFA) fixed NK-92 cells using IL-18R1/CD218a antibody (84390-5-RR, Clone: 241673G6) at dilution of 1:200 and CoraLite® 488-Conjugated Goat Anti-Rabbit IgG(H+L) (SA00013-2). This data was developed using the same antibody clone with 84390-5-PBS in a different storage buffer formulation.



Bi-layer interferometry (BLI) kinetic assays of 84390-5-RR against Human IL-18R1/CD218a were performed. The affinity constant is 0.948 nM.