

For Research Use Only

# ZBP1 Recombinant antibody, PBS Only (Detector)

Catalog Number: 84396-2-PBS



## Basic Information

Catalog Number: 84396-2-PBS	GenBank Accession Number: BC028218	Purification Method: Protein A purification
Size: 1 mg/ml	GeneID (NCBI): 81030	CloneNo.: 241582E2
Source: Rabbit	UNIPROT ID: Q9H171	
Isotype: IgG	Full Name: Z-DNA binding protein 1	
Immunogen Catalog Number: AG4119	Calculated MW: 46 kDa	

## Applications

**Tested Applications:**  
Cytometric bead array, Sandwich ELISA, Indirect ELISA,  
Sample test

**Species Specificity:**  
human

## Background Information

### Storage

**Storage:**  
Store at -80°C.  
**The product is shipped with ice packs. Upon receipt, store it immediately at -80°C**

**Storage Buffer:**  
PBS Only

For technical support and original validation data for this product please contact:

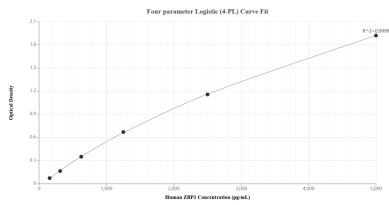
T: 4006900926

E: [Proteintech-CN@ptglab.com](mailto:Proteintech-CN@ptglab.com)

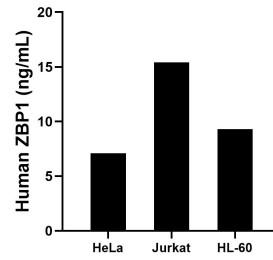
W: [ptgcn.com](http://ptgcn.com)

**This product is exclusively available under Proteintech Group brand and is not available to purchase from any other manufacturer.**

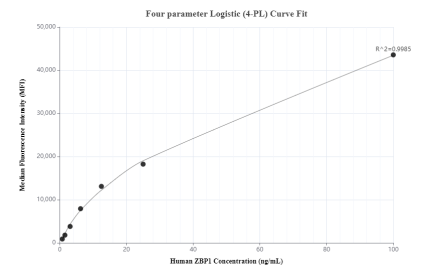
## Selected Validation Data



Sandwich ELISA standard curve of MP01267-1, Human ZBP1 Recombinant Matched Antibody Pair - PBS only. 84396-1-PBS was coated to a plate as the capture antibody and incubated with serial dilutions of standard Ag4119. 84396-2-PBS was HRP conjugated as the detection antibody. Range: 156-5000 pg/mL



The mean ZBP1 concentration was determined to be 7.1 ng/mL in HeLa cell extract based on a 2.8 mg/mL extract load, 15.4 ng/mL in Jurkat cell extract based on a 1.5 mg/mL extract load and 9.3 ng/mL in HL-60 cell extract based on a 1.4 mg/mL extract load.



Cytometric bead array standard curve of MP01267-1, ZBP1 Recombinant Matched Antibody Pair, PBS Only. Capture antibody: 84396-1-PBS. Detection antibody: 84396-2-PBS. Standard: Ag4119. Range: 0.781-100 ng/mL