

For Research Use Only

CD40 Recombinant antibody, PBS Only (Detector)

Catalog Number: 84406-5-PBS



Basic Information

Catalog Number:

84406-5-PBS

Size:

1 mg/ml

Source:

Rabbit

Isotype:

IgG

GenBank Accession Number:

NM_001250.6

GeneID (NCBI):

958

ENSEMBL Gene ID:

ENSG00000101017

UNIPROT ID:

P25942-1

Full Name:

CD40 molecule, TNF receptor
superfamily member 5

Calculated MW:

31kDa

Purification Method:

Protein A purification

CloneNo.:

241760F4

Applications

Tested Applications:

Sandwich ELISA, Indirect ELISA, Sample test

Species Specificity:

human

Background Information

Storage

Storage:

Store at -80°C.

The product is shipped with ice packs. Upon receipt, store it immediately at -80°C

Storage Buffer:

PBS Only

For technical support and original validation data for this product please contact:

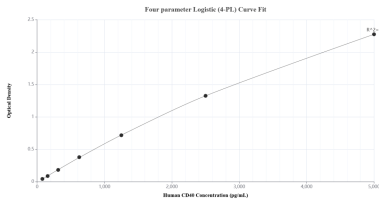
T: 4006900926

E: Proteintech-CN@ptglab.com

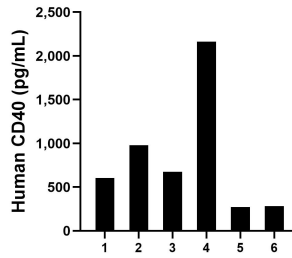
W: ptgcn.com

This product is exclusively available under Proteintech Group brand and is not available to purchase from any other manufacturer.

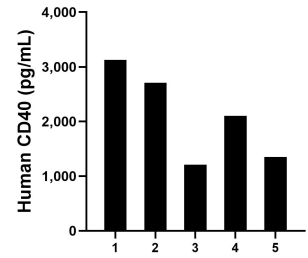
Selected Validation Data



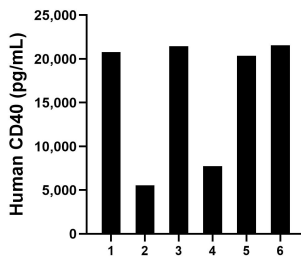
Sandwich ELISA standard curve of MP01294-3, Human CD40 Recombinant Matched Antibody Pair - PBS only. 84406-3-PBS was coated to a plate as the capture antibody and incubated with serial dilutions of standard Eg1797. 84406-5-PBS was HRP conjugated as the detection antibody. Range: 78.1-5000 pg/mL



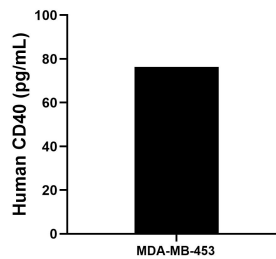
Saliva of six individual healthy human donors was measured. The CD40 concentration of detected samples was determined to be 829.1 pg/mL with a range of 270.5-2,164.5 pg/mL.



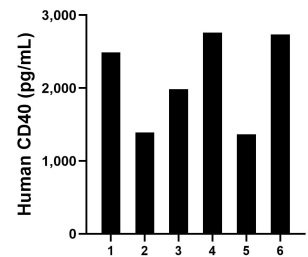
Human milk of five individual healthy human donors was measured. The CD40 concentration of detected samples was determined to be 2,099.7 pg/mL with a range of 1,212.9-3,125.0 pg/mL.



Urine of six individual healthy human donors was measured. The CD40 concentration of detected samples was determined to be 1,6246.6 pg/mL with a range of 5,532.8-21,569.7 pg/mL.



MDA-MB-453 were cultured in DMEM supplemented with 10% fetal bovine serum, 2.5 mM L-glutamine, 100 U/mL penicillin, and 100 µg/mL streptomycin sulfate. An aliquot of the cell culture supernate was removed, assayed for human CD40, and measured 76.3 pg/mL.



Serum of six individual healthy human donors was measured. The CD40 concentration of detected samples was determined to be 2,121.2 pg/mL with a range of 1,366.2-2,760.0 pg/mL.