

For Research Use Only

Mouse CEACAM-1/CD66a Recombinant antibody, PBS Only (Capture/Detector)

Catalog Number: 84409-3-PBS



Basic Information

Catalog Number:

84409-3-PBS

Size:

1 mg/ml

Source:

Rabbit

Isotype:

IgG

GenBank Accession Number:

GeneID (NCBI):

26365

UNIPROT ID:

P31809-1

Full Name:

carcinoembryonic antigen-related
cell adhesion molecule 1

Calculated MW:

57kDa

Purification Method:

Protein A purification

CloneNo.:

241856E4

Applications

Tested Applications:

Cytometric bead array, Sandwich ELISA, Indirect ELISA,
Sample test

Species Specificity:

mouse

Background Information

Storage

Storage:

Store at -80°C.

The product is shipped with ice packs. Upon receipt, store it immediately at -80°C

Storage Buffer:

PBS Only

For technical support and original validation data for this product please contact:

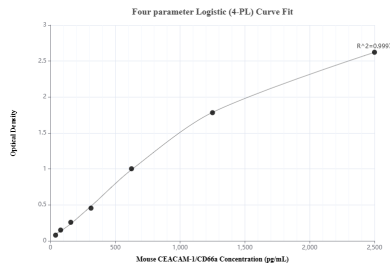
T: 4006900926

E: Proteintech-CN@ptglab.com

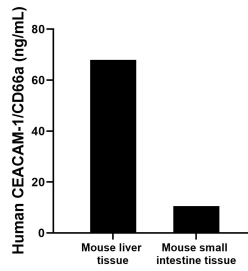
W: ptgcn.com

This product is exclusively available under Proteintech Group brand and is not available to purchase from any other manufacturer.

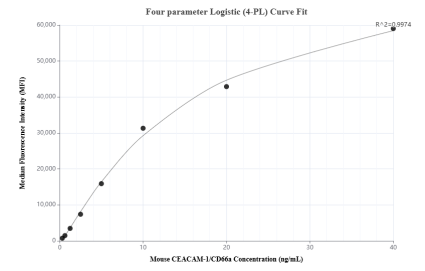
Selected Validation Data



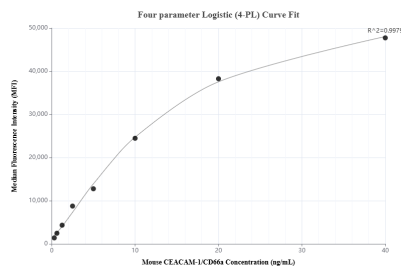
Sandwich ELISA standard curve of MP01297-2, Mouse CEACAM-1/CD66a Recombinant Matched Antibody Pair - PBS only. 84409-4-PBS was coated to a plate as the capture antibody and incubated with serial dilutions of standard Eg1423. 84409-3-PBS was HRP conjugated as the detection antibody. Range: 39.1-2500 pg/mL



The mean CEACAM-1/CD66a concentration was determined to be 67.98 ng/mL in mouse liver tissue extract based on a 3.7 mg/mL extract load and 10.51 ng/mL in mouse small intestine tissue extract based on a 1.6 mg/mL extract load.



Cytometric bead array standard curve of MP01297-1, MOUSE CEACAM1/CD66a Recombinant Matched Antibody Pair, PBS Only. Capture antibody: 84409-3-PBS. Detection antibody: 84409-1-PBS. Standard: Eg1423. Range: 0.313-40 ng/mL



Cytometric bead array standard curve of MP01297-2, MOUSE CEACAM-1/CD66a Recombinant Matched Antibody Pair, PBS Only. Capture antibody: 84409-4-PBS. Detection antibody: 84409-3-PBS. Standard: Eg1423. Range: 0.313-40 ng/mL