

For Research Use Only

# Mouse CEACAM1/CD66a Recombinant antibody, PBS Only (Capture/Detector)

Catalog Number: 84409-4-PBS



## Basic Information

Catalog Number:

84409-4-PBS

Size:

1 mg/ml

Source:

Rabbit

Isotype:

IgG

GenBank Accession Number:

GeneID (NCBI):

26365

UNIPROT ID:

P31809-1

Full Name:

carcinoembryonic antigen-related cell adhesion molecule 1

Calculated MW:

57 kDa

Observed MW:

120 kDa

Purification Method:

Protein A purification

CloneNo.:

241856H5

## Applications

Tested Applications:

WB, Cytometric bead array, Sandwich ELISA, Indirect ELISA, Sample test

Species Specificity:

mouse

## Background Information

CEACAM1, also known as CD66a or BGP (biliary glycoprotein), is a member of the carcinoembryonic antigen (CEA) family which belongs to the immunoglobulin superfamily of cell adhesion molecules (PMID: 16919437). CEACAMs play major roles in cell-cell and cell-ECM adhesion and have been implicated in the control of cell proliferation, angiogenesis, and tissue remodeling (PMID: 23021083). CEACAM1 is a transmembrane glycoprotein that is expressed on epithelial, endothelial, and immune cells (PMID: 30314283). CEACAM1 has been demonstrated to play a role in morphogenesis, apoptosis, angiogenesis, cell proliferation, cell motility, fibrosis, and immunity (PMID: 31604530).

## Storage

Storage:

Store at -80°C.

The product is shipped with ice packs. Upon receipt, store it immediately at -80°C

Storage Buffer:

PBS Only

For technical support and original validation data for this product please contact:

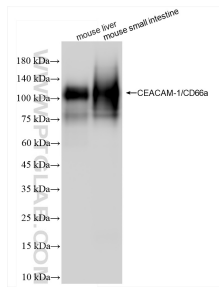
T: 4006900926

E: [Proteintech-CN@ptglab.com](mailto:Proteintech-CN@ptglab.com)

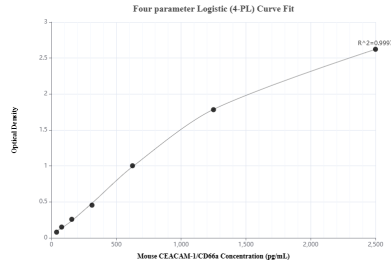
W: [ptgcn.com](http://ptgcn.com)

This product is exclusively available under Proteintech Group brand and is not available to purchase from any other manufacturer.

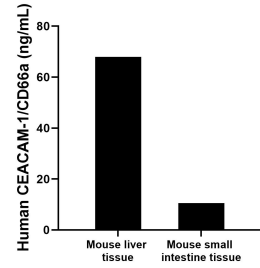
## Selected Validation Data



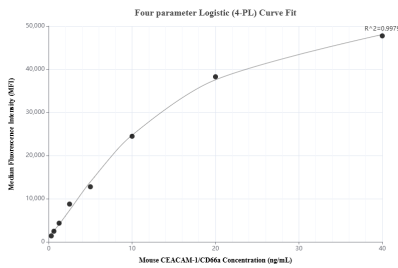
Various lysates were subjected to SDS PAGE followed by western blot with 84409-4-RR (CEACAM-1/CD66a antibody) at dilution of 1:10000 incubated at room temperature for 1.5 hours. This data was developed using the same antibody clone with 84409-4-PBS in a different storage buffer formulation.



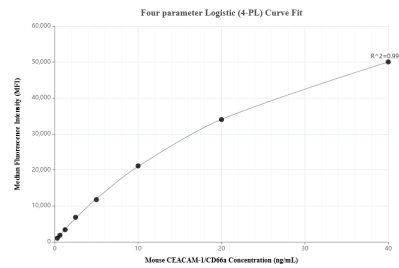
Sandwich ELISA standard curve of MP01297-2, Mouse CEACAM-1/CD66a Recombinant Matched Antibody Pair - PBS only. 84409-4-PBS was coated to a plate as the capture antibody and incubated with serial dilutions of standard Eg1423. 84409-3-PBS was HRP conjugated as the detection antibody. Range: 39.1-2500 pg/mL



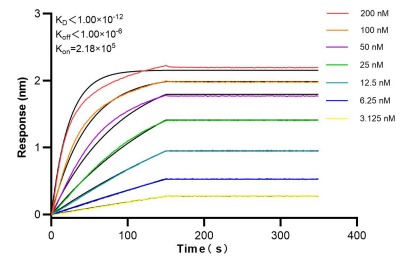
The mean CEACAM-1/CD66a concentration was determined to be 67.98 ng/mL in mouse liver tissue extract based on a 3.7 mg/mL extract load and 10.51 ng/mL in mouse small intestine tissue extract based on a 1.6 mg/mL extract load.



Cytometric bead array standard curve of MP01297-2, MOUSE CEACAM-1/CD66a Recombinant Matched Antibody Pair, PBS Only. Capture antibody: 84409-4-PBS. Detection antibody: 84409-3-PBS. Standard: Eg1423. Range: 0.313-40 ng/mL



Cytometric bead array standard curve of MP01297-3, MOUSE CEACAM1/CD66a Recombinant Matched Antibody Pair, PBS Only. Capture antibody: 84409-2-PBS. Detection antibody: 84409-4-PBS. Standard: Eg1423. Range: 0.313-40 ng/mL



Bi-layer interferometry (BLI) kinetic assays of 84409-4-RR against Mouse CEACAM1/CD66a were performed. The affinity constant is below 1 pM.