

For Research Use Only

# MLL4 Recombinant antibody

Catalog Number: 84410-3-RR



## Basic Information

|   |  |  |
|---|--|--|
| <b>Catalog Number:</b><br>84410-3-RR        | <b>GenBank Accession Number:</b><br>BC009337                         | <b>Purification Method:</b><br>Protein A purification                  |
| <b>Size:</b><br>1000 ug/ml                  | <b>GeneID (NCBI):</b><br>9757  | <b>CloneNo.:</b><br>241819G9   |
| <b>Source:</b><br>Rabbit                    | <b>UNIPROT ID:</b><br>Q9UMN6   | <b>Recommended Dilutions:</b><br>IHC 1:200-1:800<br>IF/ICC 1:200-1:800 |
| <b>Isotype:</b><br>IgG                      | <b>Full Name:</b><br>myeloid/Lymphoid or mixed-Lineage<br>leukemia 4 |  |
| <b>Immunogen Catalog Number:</b><br>AG35385 |  |  |

## Applications

**Tested Applications:**  
IHC, IF/ICC, ELISA

**Species Specificity:**  
human

**Positive Controls:**  
IHC : human ovary cancer tissue,  
IF/ICC : U2OS cells,

**Note-IHC: suggested antigen retrieval with TE buffer pH 9.0; (\*) Alternatively, antigen retrieval may be performed with citrate buffer pH 6.0**

## Background Information

### Storage

**Storage:**  
Store at -20°C. Stable for one year after shipment.

**Storage Buffer:**  
PBS with 0.02% sodium azide and 50% glycerol pH 7.3.

Aliquoting is unnecessary for -20°C storage

For technical support and original validation data for this product please contact:

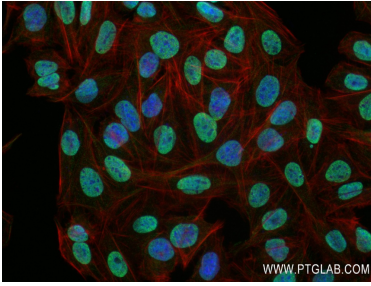
T: 4006900926

E: [Proteintech-CN@ptglab.com](mailto:Proteintech-CN@ptglab.com)

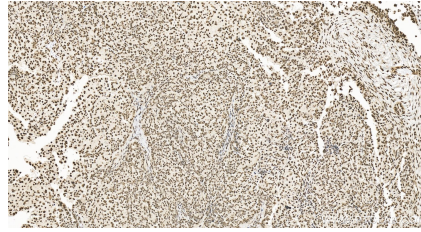
W: [ptgcn.com](http://ptgcn.com)

This product is exclusively available under Proteintech Group brand and is not available to purchase from any other manufacturer.

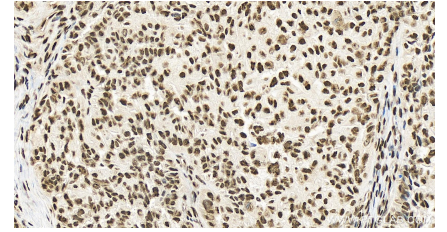
## Selected Validation Data



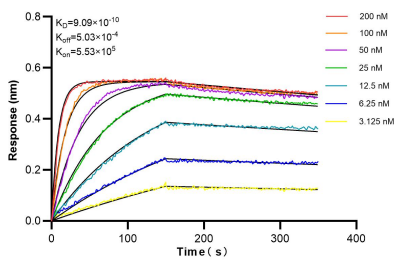
Immunofluorescent analysis of (4% PFA) fixed U2OS cells using MLL4 antibody (84410-3-RR, Clone: 241819G9) at dilution of 1:400 and CoraLite®488-Conjugated Goat Anti-Rabbit IgG(H+L) (SA00013-2), CL594-Phalloidin (red).



Immunohistochemical analysis of paraffin-embedded human ovary cancer tissue slide using 84410-3-RR (MLL4 antibody) at dilution of 1:400 (under 10x lens). Heat mediated antigen retrieval with Tris-EDTA buffer (pH 9.0).



Immunohistochemical analysis of paraffin-embedded human ovary cancer tissue slide using 84410-3-RR (MLL4 antibody) at dilution of 1:400 (under 40x lens). Heat mediated antigen retrieval with Tris-EDTA buffer (pH 9.0).



Biolayer interferometry (BLI) kinetic assays of 84410-3-RR against Human MLL4 were performed. The affinity constant is 0.909 nM.