

For Research Use Only

Mouse Thrombomodulin Recombinant antibody, PBS Only (Detector)

Catalog Number: 84412-1-PBS



Basic Information

Catalog Number:	84412-1-PBS	GenBank Accession Number:	NM_009378.3	Purification Method:	Protein A purification
Concentration:	1 mg/ml	GeneID (NCBI):	21824	CloneNo.:	241730A6
Source:	Rabbit	UNIPROT ID:	P15306		
Isotype:	IgG	Full Name:	thrombomodulin		
		Calculated MW:	62kDa		

Applications

Tested Applications:
Cytometric bead array, Sandwich ELISA, Indirect ELISA, Sample test

Species Specificity:
mouse

Background Information

Storage

Storage:
Store at -80°C.
The product is shipped with ice packs. Upon receipt, store it immediately at -80°C

Storage Buffer:
PBS Only

For technical support and original validation data for this product please contact:

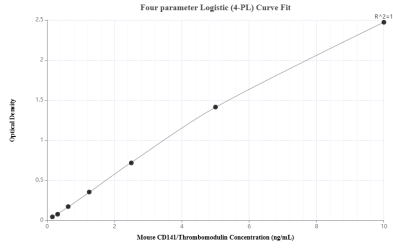
T: 4006900926

E: Proteintech-CN@ptglab.com

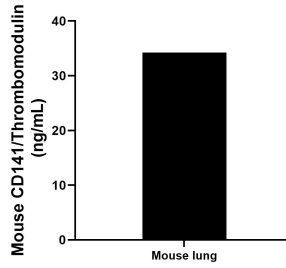
W: ptgcn.com

This product is exclusively available under Proteintech Group brand and is not available to purchase from any other manufacturer.

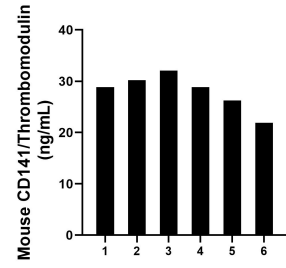
Selected Validation Data



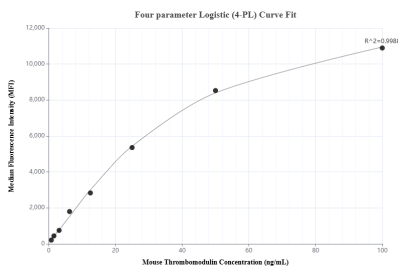
Sandwich ELISA standard curve of MP01300-2, Mouse CD141/Thrombomodulin Recombinant Matched Antibody Pair - PBS only. 84412-3-PBS was coated to a plate as the capture antibody and incubated with serial dilutions of standard Eg1139. 84412-1-PBS was HRP conjugated as the detection antibody. Range: 0.156-10 ng/mL



Mouse lung, cut into 1-2 mm pieces, was cultured for 4 days in 25-30 mL of RPMI supplemented with 10% fetal bovine serum. The cell culture supernate was removed, assayed for CD141/Thrombomodulin, and measured 34.22 ng/mL



Serum of six mice was measured. The mouse CD141/Thrombomodulin concentration of detected samples was determined to be 28.01 ng/mL with a range of 21.90 - 32.07 ng/mL



Cytometric bead array standard curve of MP01300-2, MOUSE CD141/Thrombomodulin Recombinant Matched Antibody Pair, PBS Only. Capture antibody: 84412-3-PBS. Detection antibody: 84412-1-PBS. Standard: Eg1139. Range: 0.781-100 ng/mL