

For Research Use Only

Mouse CD141/Thrombomodulin Recombinant antibody, PBS Only (Capture)

Catalog Number: 84412-3-PBS



Basic Information

Catalog Number: 84412-3-PBS	GenBank Accession Number: NM_009378.3	Purification Method: Protein A purification
Concentration: 1 mg/ml	GeneID (NCBI): 21824	CloneNo.: 241730D4
Source: Rabbit	UNIPROT ID: P15306	
Isotype: IgG	Full Name: thrombomodulin	
	Calculated MW: 62kDa	
	Observed MW: 105 kDa	

Applications

Tested Applications:
WB, IF/ICC, Cytometric bead array, Sandwich ELISA,
Indirect ELISA, Sample test

Species Specificity:
mouse

Background Information

Thrombomodulin, also known as CD141, is an endothelial cell surface glycoprotein that forms a 1:1 complex with the coagulation factor thrombin and plays an important role as a natural anticoagulant. Thrombomodulin serves to convert thrombin from a procoagulant protein into the activator for protein C. Once converted to activated protein C (APC), this protein serves as a major anticoagulant in blood (PMID: 2827310). Thrombomodulin is also located in other cells (keratinocytes, osteoblasts, macrophages,...) where it might be involved in cell differentiation or inflammation (PMID: 9814688). In humans, thrombomodulin is encoded by the THBD gene. Mutations in this gene are a cause of thromboembolic disease, also known as inherited thrombophilia. Thrombomodulin is glycosylated and has an apparent molecular weight of 75 to 110 kDa (PMID: 1650405; 2827310).

Storage

Storage:
Store at -80°C.
The product is shipped with ice packs. Upon receipt, store it immediately at -80°C

Storage Buffer:
PBS Only

For technical support and original validation data for this product please contact:

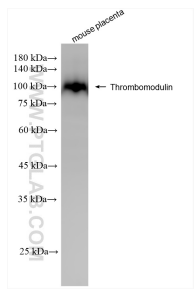
T: 4006900926

E: Proteintech-CN@ptglab.com

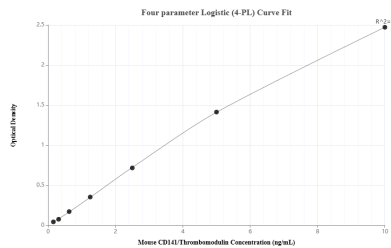
W: ptgcn.com

This product is exclusively available under Proteintech Group brand and is not available to purchase from any other manufacturer.

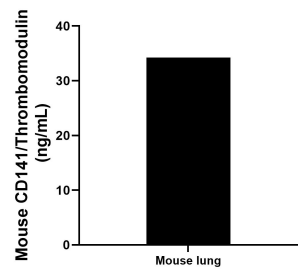
Selected Validation Data



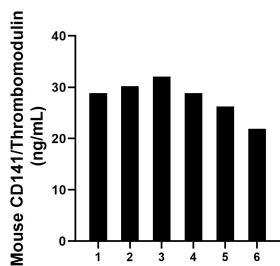
mouse placenta tissue was subjected to SDS PAGE followed by western blot with 84412-3-RR (CD141/Thrombomodulin antibody) at dilution of 1:5000 incubated at room temperature for 1.5 hours. This data was developed using the same antibody clone with 84412-3-PBS in a different storage buffer formulation.



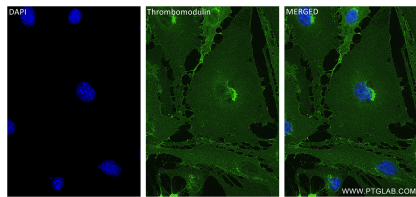
Sandwich ELISA standard curve of MP01300-2, Mouse CD141/Thrombomodulin Recombinant Matched Antibody Pair - PBS only. 84412-3-PBS was coated to a plate as the capture antibody and incubated with serial dilutions of standard Eg1139. 84412-1-PBS was HRP conjugated as the detection antibody. Range: 0.156-10 ng/mL



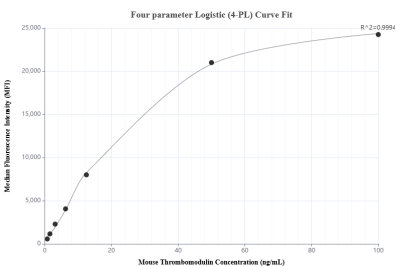
Mouse lung, cut into 1-2 mm pieces, was cultured for 4 days in 25-30 mL of RPMI supplemented with 10% fetal bovine serum. The cell culture supernate was removed, assayed for CD141/Thrombomodulin, and measured 34.22 ng/mL



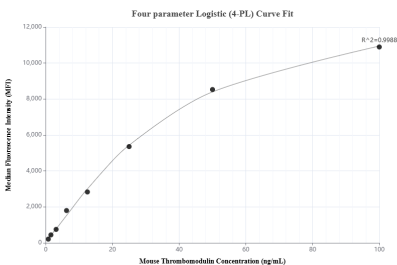
Serum of six mice was measured. The mouse CD141/Thrombomodulin concentration of detected samples was determined to be 28.01 ng/mL with a range of 21.90 - 32.07 ng/mL



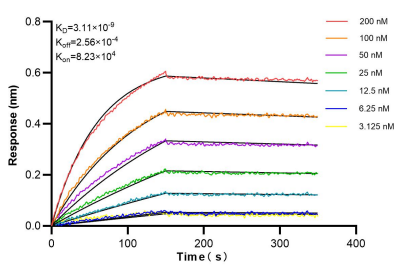
Immunofluorescent analysis of (4% PFA) fixed bEnd.3 cells using CD141/Thrombomodulin antibody (84412-3-RR, Clone: 241730D4) at dilution of 1:400 and CoraLite®488-Conjugated Goat Anti-Rabbit IgG(H+L) (SA00013-2). This data was developed using the same antibody clone with 84412-3-PBS in a different storage buffer formulation.



Cytometric bead array standard curve of MP01300-1, MOUSE CD141/Thrombomodulin Recombinant Matched Antibody Pair, PBS Only. Capture antibody: 84412-3-PBS. Detection antibody: 84412-2-PBS. Standard: Eg1139. Range: 0.781-100 ng/mL



Cytometric bead array standard curve of MP01300-2, MOUSE CD141/Thrombomodulin Recombinant Matched Antibody Pair, PBS Only. Capture antibody: 84412-3-PBS. Detection antibody: 84412-1-PBS. Standard: Eg1139. Range: 0.781-100 ng/mL



Biolayer interferometry (BLI) kinetic assays of 84412-3-RR against Mouse CD141/Thrombomodulin were performed. The affinity constant is 3.11 nM.