

For Research Use Only

# CCL20/MIP-3 alpha Recombinant antibody, PBS Only (Capture/Detector)

Catalog Number: 84413-3-PBS



## Basic Information

<b>Catalog Number:</b> 84413-3-PBS	<b>GenBank Accession Number:</b> NM_004591.3	<b>Purification Method:</b> Protein A purification
<b>Size:</b> 1 mg/ml	<b>GeneID (NCBI):</b> 6364	<b>CloneNo.:</b> 241694B4
<b>Source:</b> Rabbit	<b>UNIPROT ID:</b> P78556-1	
<b>Isotype:</b> IgG	<b>Full Name:</b> chemokine (C-C motif) ligand 20	
	<b>Calculated MW:</b> 11kDa	
	<b>Observed MW:</b> 11 kDa	

## Applications

**Tested Applications:**  
WB, IHC, Cytometric bead array, Indirect ELISA

**Species Specificity:**  
human, mouse

## Background Information

CCL20, also known as macrophage infiltrating factor protein 3 $\alpha$ , is a C-C chemokine that specifically binds to the receptor CCR6. CCL20 is produced in various tissues and by a wide range of immune cells, including neutrophils, natural killer cells, T-helper type 17 (Th17) cells, B cells, and various antigen-presenting cells, such as dendritic cells (DCs), Langerhans cells, and macrophages. Increased expression of CCL20 is likely involved in the increased recruitment of dendritic cells observed in fibroinflammatory diseases such as chronic obstructive pulmonary disease (COPD). CCL20 expression is increased by the proinflammatory cytokine IL-1 beta.

## Storage

**Storage:**  
Store at -80°C.  
**The product is shipped with ice packs. Upon receipt, store it immediately at -80°C**

**Storage Buffer:**  
PBS Only

For technical support and original validation data for this product please contact:

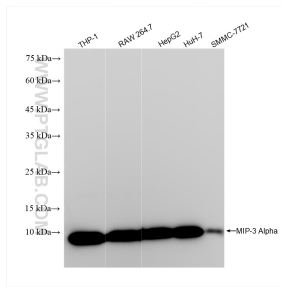
T: 4006900926

E: [Proteintech-CN@ptglab.com](mailto:Proteintech-CN@ptglab.com)

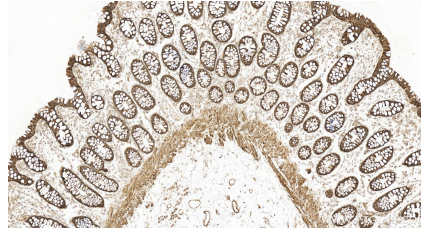
W: [ptgcn.com](http://ptgcn.com)

**This product is exclusively available under Proteintech Group brand and is not available to purchase from any other manufacturer.**

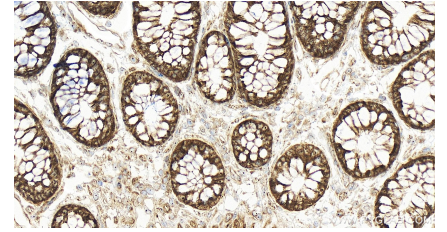
## Selected Validation Data



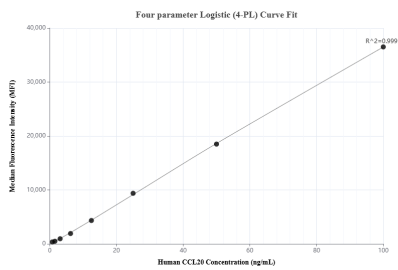
Various lysates were subjected to SDS PAGE followed by western blot with 84413-3-RR (CCL20/MIP-3 alpha antibody) at dilution of 1:10000 incubated at room temperature for 1.5 hours. This data was developed using the same antibody clone with 84413-3-PBS in a different storage buffer formulation.



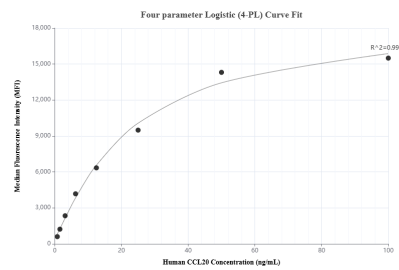
Immunohistochemical analysis of paraffin-embedded human colon tissue slide using 84413-3-RR (CCL20/MIP-3 alpha antibody) at dilution of 1:2500 (under 10x lens). Heat mediated antigen retrieval with Tris-EDTA buffer (pH 9.0). This data was developed using the same antibody clone with 84413-3-PBS in a different storage buffer formulation.



Immunohistochemical analysis of paraffin-embedded human colon tissue slide using 84413-3-RR (CCL20/MIP-3 alpha antibody) at dilution of 1:2500 (under 40x lens). Heat mediated antigen retrieval with Tris-EDTA buffer (pH 9.0). This data was developed using the same antibody clone with 84413-3-PBS in a different storage buffer formulation.



Cytometric bead array standard curve of MP01301-1, CCL20/MIP-3 alpha Recombinant Matched Antibody Pair, PBS Only. Capture antibody: 84413-1-PBS. Detection antibody: 84413-3-PBS. Standard: Eg2398. Range: 0.781-100 ng/mL.



Cytometric bead array standard curve of MP01301-3, CCL20/MIP-3 alpha Recombinant Matched Antibody Pair, PBS Only. Capture antibody: 84413-3-PBS. Detection antibody: 84413-2-PBS. Standard: Eg2398. Range: 0.781-100 ng/mL.