

For Research Use Only

# CCL20 Recombinant antibody, PBS Only (Detector)

Catalog Number: 84413-5-PBS



## Basic Information

<b>Catalog Number:</b> 84413-5-PBS	<b>GenBank Accession Number:</b> NM_004591.3	<b>Purification Method:</b> Protein A purification
<b>Size:</b> 1 mg/ml	<b>GeneID (NCBI):</b> 6364	<b>CloneNo.:</b> 241694D5
<b>Source:</b> Rabbit	<b>UNIPROT ID:</b> P78556-1	
<b>Isotype:</b> IgG	<b>Full Name:</b> chemokine (C-C motif) ligand 20	
	<b>Calculated MW:</b> 11kDa	

## Applications

**Tested Applications:**  
Sandwich ELISA, Indirect ELISA, Sample test

**Species Specificity:**  
human

## Background Information

### Storage

**Storage:**  
Store at -80°C.  
**The product is shipped with ice packs. Upon receipt, store it immediately at -80°C**

**Storage Buffer:**  
PBS Only

For technical support and original validation data for this product please contact:

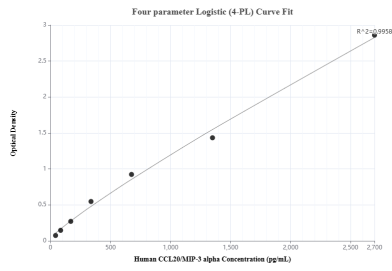
T: 4006900926

E: Proteintech-CN@ptglab.com

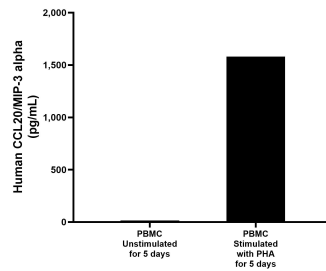
W: ptgcn.com

**This product is exclusively available under Proteintech Group brand and is not available to purchase from any other manufacturer.**

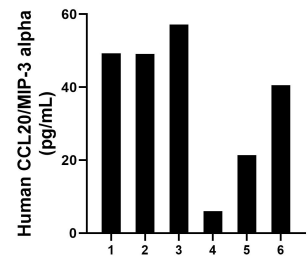
## Selected Validation Data



Sandwich ELISA standard curve of MP01301-4, Human CCL20/MIP-3 alpha Recombinant Matched Antibody Pair - PBS only. 84413-1-PBS was coated to a plate as the capture antibody and incubated with serial dilutions of standard Eg2398. 84413-5-PBS was HRP conjugated as the detection antibody. Range: 42.2-2700 pg/mL



Human peripheral blood mononuclear cells (PBMC) were cultured unstimulated or stimulated with 10  $\mu$ g/mL PHA for 5 days. The mean CCL20/MIP-3 alpha concentration was determined to be 14.8 pg/mL in unstimulated PBMC supernatant, 1,579.6 pg/mL in PHA stimulated PBMC supernatant.



Serum of six individual healthy human donors was measured. The human CCL20/MIP-3 alpha concentration of detected samples was determined to be 37.3 pg/mL with a range of 6.0 - 57.1 pg/mL.