

For Research Use Only

# ACVRL1 Recombinant antibody, PBS Only (Detector)

Catalog Number: 84421-1-PBS



## Basic Information

<b>Catalog Number:</b> 84421-1-PBS	<b>GenBank Accession Number:</b> BC042637	<b>Purification Method:</b> Protein A purification
<b>Size:</b> 1 mg/ml	<b>GeneID (NCBI):</b> 94	<b>CloneNo.:</b> 241686B9
<b>Source:</b> Rabbit	<b>UNIPROT ID:</b> P37023	
<b>Isotype:</b> IgG	<b>Full Name:</b> activin A receptor type II-like 1	
	<b>Calculated MW:</b> 56 kDa	

## Applications

**Tested Applications:**  
IF/ICC, Cytometric bead array, Indirect ELISA

**Species Specificity:**  
human

## Background Information

ACVRL1 (also known as ALK1) is a type I cell-surface receptor for the TGF-beta superfamily of ligands. It shares with other type I receptors a high degree of similarity in serine-threonine kinase subdomains, a glycine- and serine-rich region (called the GS domain) preceding the kinase domain, and a short C-terminal tail. ACVRL1 is highly expressed in endothelial cells and has a critical role in the control of blood vessel development and repair (PMID: 8640225). Mutations in the ACVRL1 gene are associated with hemorrhagic telangiectasia type 2.

## Storage

**Storage:**  
Store at -80°C.  
**The product is shipped with ice packs. Upon receipt, store it immediately at -80°C**

**Storage Buffer:**  
PBS Only

For technical support and original validation data for this product please contact:

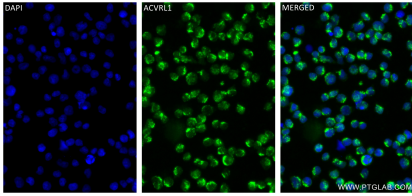
T: 4006900926

E: [Proteintech-CN@ptglab.com](mailto:Proteintech-CN@ptglab.com)

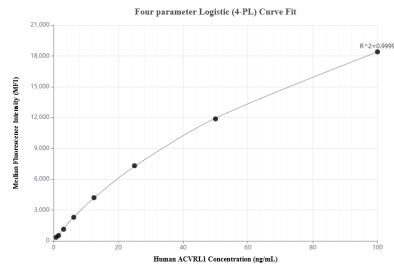
W: [ptgcn.com](http://ptgcn.com)

**This product is exclusively available under Proteintech Group brand and is not available to purchase from any other manufacturer.**

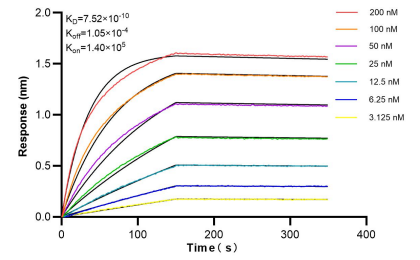
## Selected Validation Data



Immunofluorescent analysis of (4% PFA) fixed Jurkat cells using ACVRL1 antibody (84421-1-RR, Clone: 241686B9) at dilution of 1:250 and CoraLite®488-Conjugated Goat Anti-Rabbit IgG(H+L) (SA00013-2). This data was developed using the same antibody clone with 84421-1-PBS in a different storage buffer formulation.



Cytometric bead array standard curve of MP01306-1, ACVRL1 Recombinant Matched Antibody Pair, PBS Only. Capture antibody: 84421-2-PBS. Detection antibody: 84421-1-PBS. Standard: Eg2132. Range: 0.781-100 ng/mL



Bi-layer interferometry (BLI) kinetic assays of 84421-1-RR against Human ACVRL1 were performed. The affinity constant is 0.752 nM.