

For Research Use Only

PERM1 Recombinant antibody, PBS Only

Catalog Number: 84425-5-PBS



Basic Information

Catalog Number: 84425-5-PBS	GenBank Accession Number: BC006300	Purification Method: Protein A purification
Size: 1 mg/ml	GeneID (NCBI): 84808	CloneNo.: 241613B6
Source: Rabbit	UNIPROT ID: Q55V97	
Isotype: IgG	Full Name: chromosome 1 open reading frame 170	
Immunogen Catalog Number: AG23833		

Applications

Tested Applications:
IF/ICC, Indirect ELISA

Species Specificity:
human, rat

Background Information

PERM1 (PGC-1/ERR-induced regulator in muscle 1) is a muscle-specific protein induced by PGC-1 α and ERR α . PERM1 protein expression is mainly restricted to heart and skeletal muscle, indicating PERM1 functions as a tissue-specific regulator of mitochondrial biogenesis in response to exercise (PMID: 33549681, 36028747). Ablation of Perm1 in mice results in reduced protein expression of lipin-1 accompanied by accumulation of specific phospholipid species (PMID: 33549681). There are two major isoforms of Perm1 protein, the short isoform is about 85 kDa, and the long isoform is 105 kDa.

Storage

Storage:
Store at -80°C.
The product is shipped with ice packs. Upon receipt, store it immediately at -80°C

Storage Buffer:
PBS Only

For technical support and original validation data for this product please contact:

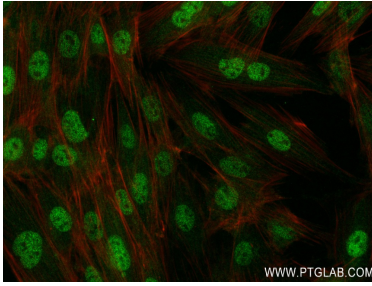
T: 4006900926

E: Proteintech-CN@ptglab.com

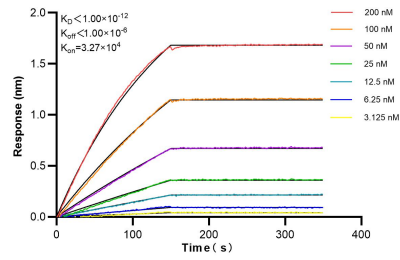
W: ptgcn.com

This product is exclusively available under Proteintech Group brand and is not available to purchase from any other manufacturer.

Selected Validation Data



Immunofluorescent analysis of (4% PFA) fixed H9C2 cells using PERM1 antibody (84425-5-RR, Clone: 241613B6) at dilution of 1:250 and CoraLite®488-Conjugated Goat Anti-Rabbit IgG(H+L) (SA00013-2), CL594-Phalloidin (red). This data was developed using the same antibody clone with 84425-5-PBS in a different storage buffer formulation.



Biolayer interferometry (BLI) kinetic assays of 84425-5-RR against Human PERM1 were performed. The affinity constant is below 1 pM.