

For Research Use Only

Ki-67 Recombinant antibody

Catalog Number: 84432-1-RR



Basic Information

Catalog Number: 84432-1-RR	GenBank Accession Number: NM_001081117.2	Purification Method: Protein A purification
Size: 1000 µg/ml	GeneID (NCBI): 17345	CloneNo.: 241768E2
Source: Rabbit	UNIPROT ID: E9PVX6-1	Recommended Dilutions: WB 1:1000-1:6000 IHC 1:50-1:500 IF/ICC 1:200-1:800
Isotype: IgG	Full Name: antigen identified by monoclonal antibody Ki 67	
	Calculated MW: 351kDa	
	Observed MW: 350 kDa	

Applications

Tested Applications: WB, IHC, IF/ICC, ELISA	Positive Controls: WB : NIH/3T3 cells, IHC : mouse spleen tissue, rat spleen tissue IF/ICC : C2C12 cells,
Species Specificity: mouse, rat	
Note-IHC: suggested antigen retrieval with TE buffer pH 9.0; (*) Alternatively, antigen retrieval may be performed with citrate buffer pH 6.0	

Background Information

The Ki-67 protein (also known as MKI67) is a cellular marker for proliferation. Ki67 is present during all active phases of the cell cycle (G1, S, G2 and M), but is absent in resting cells (G0). Cellular content of Ki-67 protein markedly increases during cell progression through S phase of the cell cycle. Therefore, the nuclear expression of Ki67 can be evaluated to assess tumor proliferation by immunohistochemistry.

Storage

Storage:
Store at -20°C. Stable for one year after shipment.
Storage Buffer:
PBS with 0.02% sodium azide and 50% glycerol pH 7.3.
Aliquoting is unnecessary for -20°C storage

For technical support and original validation data for this product please contact:

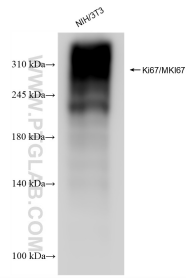
T: 4006900926

E: Proteintech-CN@ptglab.com

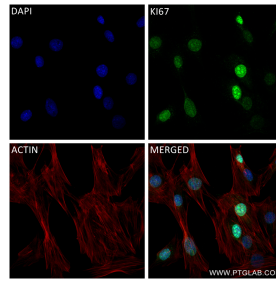
W: ptgcn.com

This product is exclusively available under Proteintech Group brand and is not available to purchase from any other manufacturer.

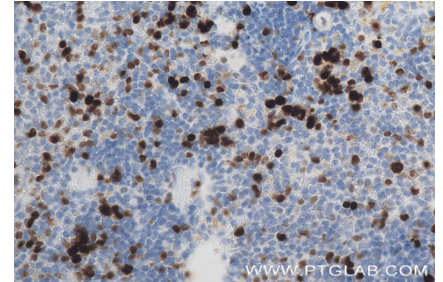
Selected Validation Data



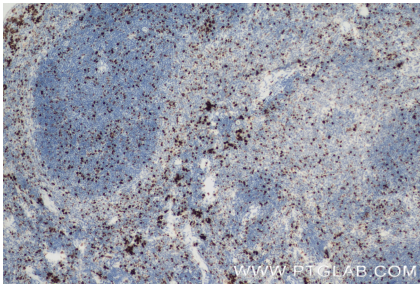
NIH/3T3 cells were subjected to SDS PAGE followed by western blot with 84432-1-RR (Ki67/MKI67 antibody) at dilution of 1:3000 incubated at room temperature for 1.5 hours.



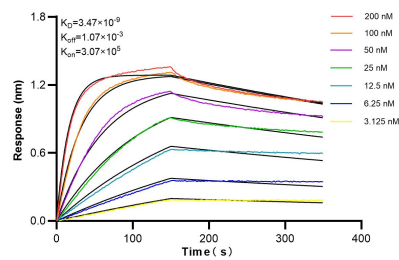
Immunofluorescent analysis of (4% PFA) fixed C2C12 cells using Ki-67 antibody (84432-1-RR, Clone: 241768E2) at dilution of 1:400 and CoraLite®488-Conjugated Goat Anti-Rabbit IgG(H+L) (SA00013-2), CL594-Phalloidin (red).



Immunohistochemical analysis of paraffin-embedded mouse spleen tissue slide using 84432-1-RR (Ki-67 antibody) at dilution of 1:200 (under 40x lens). Heat mediated antigen retrieval with Tris-EDTA buffer (pH 9.0).



Immunohistochemical analysis of paraffin-embedded mouse spleen tissue slide using 84432-1-RR (Ki-67 antibody) at dilution of 1:200 (under 10x lens). Heat mediated antigen retrieval with Tris-EDTA buffer (pH 9.0).



Biolayer interferometry (BLI) kinetic assays of 84432-1-RR against Mouse Ki-67 were performed. The affinity constant is 3.47 nM.