

For Research Use Only

Mouse Myeloperoxidase Recombinant antibody, PBS Only (Capture/Detector)

Catalog Number: 84436-3-PBS



Basic Information

Catalog Number:

84436-3-PBS

Size:

1 mg/ml

Source:

Rabbit

Isotype:

IgG

GenBank Accession Number:

AAR99349

GeneID (NCBI):

17523

UNIPROT ID:

P11247

Full Name:

myeloperoxidase

Calculated MW:

81KD

Purification Method:

Protein A purification

CloneNo.:

241839F8

Applications

Tested Applications:

Cytometric bead array, Sandwich ELISA, Indirect ELISA,
Sample test

Species Specificity:

mouse

Background Information

Storage

Storage:

Store at -80°C.

The product is shipped with ice packs. Upon receipt, store it immediately at -80°C

Storage Buffer:

PBS Only

For technical support and original validation data for this product please contact:

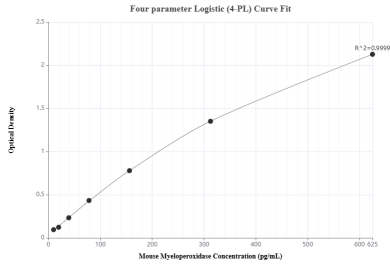
T: 4006900926

E: Proteintech-CN@ptglab.com

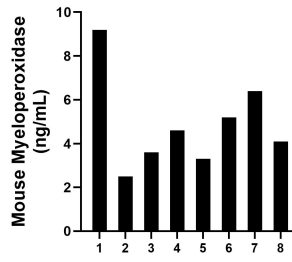
W: ptgcn.com

This product is exclusively available under Proteintech Group brand and is not available to purchase from any other manufacturer.

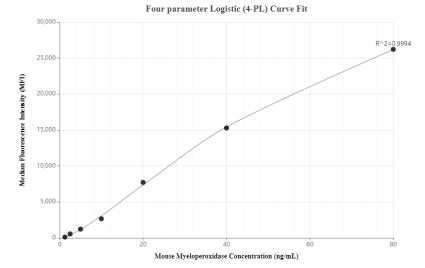
Selected Validation Data



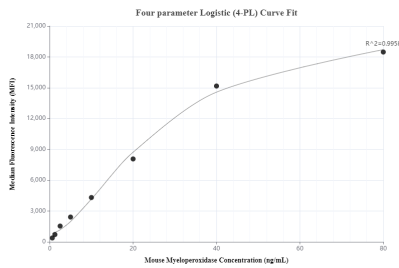
Sandwich ELISA standard curve of MP01284-4, Mouse Myeloperoxidase Recombinant Matched Antibody Pair - PBS only. 84436-3-PBS was coated to a plate as the capture antibody and incubated with serial dilutions of standard Eg0702. 84436-4-PBS was HRP conjugated as the detection antibody. Range: 9.77-625 pg/mL



Serum of eight mice was measured. The mouse Myeloperoxidase concentration of detected samples was determined to be 4.86 ng/mL with a range of 2.54 - 9.19 ng/mL.



Cytometric bead array standard curve of MP01284-2, MOUSE MPO Recombinant Matched Antibody Pair, PBS Only. Capture antibody: 84436-3-PBS. Detection antibody: 84436-1-PBS. Standard: Eg0702. Range: 1.25-80 ng/mL



Cytometric bead array standard curve of MP01284-3, MOUSE MPO Recombinant Matched Antibody Pair, PBS Only. Capture antibody: 84436-2-PBS. Detection antibody: 84436-3-PBS. Standard: Eg0702. Range: 0.625-80 ng/mL