

For Research Use Only

# TSLP Recombinant antibody, PBS Only (Capture)

Catalog Number: 84437-6-PBS



## Basic Information

<b>Catalog Number:</b> 84437-6-PBS	<b>GenBank Accession Number:</b> NM_033035.5	<b>Purification Method:</b> Protein A purification
<b>Size:</b> 1 mg/ml	<b>GeneID (NCBI):</b> 85480	<b>CloneNo.:</b> 241821D6
<b>Source:</b> Rabbit	<b>UNIPROT ID:</b> Q969D9-1	
<b>Isotype:</b> IgG	<b>Full Name:</b> thymic stromal Lymphopoietin	
	<b>Calculated MW:</b> 18 kDa	

## Applications

**Tested Applications:**  
Sandwich ELISA, Indirect ELISA, Sample test

**Species Specificity:**  
human

## Background Information

### Storage

**Storage:**  
Store at -80°C.  
**The product is shipped with ice packs. Upon receipt, store it immediately at -80°C**

**Storage Buffer:**  
PBS Only

For technical support and original validation data for this product please contact:

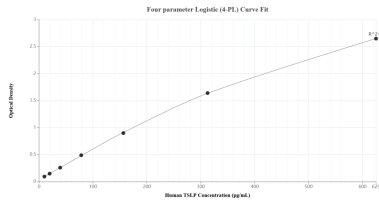
T: 4006900926

E: Proteintech-CN@ptglab.com

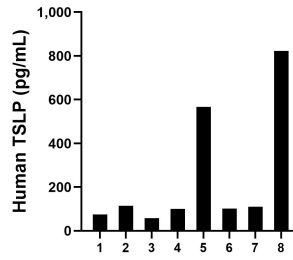
W: ptgcn.com

**This product is exclusively available under Proteintech Group brand and is not available to purchase from any other manufacturer.**

## Selected Validation Data



Sandwich ELISA standard curve of MP01287-4, Human TSLP Recombinant Matched Antibody Pair - PBS only. 84437-6-PBS was coated to a plate as the capture antibody and incubated with serial dilutions of standard Eg1238. 84437-5-PBS was HRP conjugated as the detection antibody. Range: 9.77-625 pg/mL



Serum of eight individual healthy human donors was measured. The TSLP concentration of detected samples was determined to be 243.3 pg/mL with a range of 57.6-822.5 pg/mL.