

For Research Use Only

DDR1 Recombinant antibody, PBS Only (Detector)

Catalog Number: 84438-3-PBS



Basic Information

Catalog Number: 84438-3-PBS	GenBank Accession Number: NM_001297654.2	Purification Method: Protein A purification
Size: 1 mg/ml	GeneID (NCBI): 780	CloneNo.: 241796G1
Source: Rabbit	UNIPROT ID: Q08345-1	
Isotype: IgG	Full Name: discoidin domain receptor tyrosine kinase 1	
	Calculated MW: 101kDa	

Applications

Tested Applications:
Cytometric bead array, Sandwich ELISA, Indirect ELISA, Sample test

Species Specificity:
human

Background Information

Storage

Storage:
Store at -80°C.
The product is shipped with ice packs. Upon receipt, store it immediately at -80°C

Storage Buffer:
PBS Only

For technical support and original validation data for this product please contact:

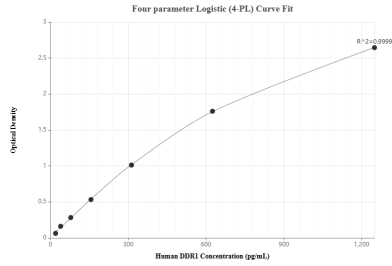
T: 4006900926

E: Proteintech-CN@ptglab.com

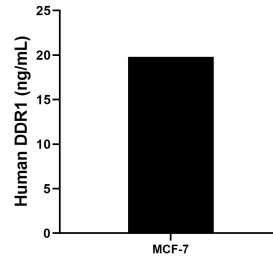
W: ptgcn.com

This product is exclusively available under Proteintech Group brand and is not available to purchase from any other manufacturer.

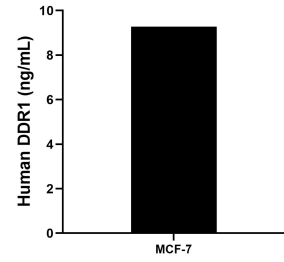
Selected Validation Data



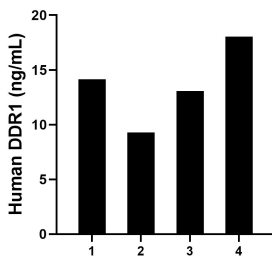
Sandwich ELISA standard curve of MP01290-4, Human DDR1 Recombinant Matched Antibody Pair - PBS only. 84438-5-PBS was coated to a plate as the capture antibody and incubated with serial dilutions of standard Eg1675. 84438-3-PBS was HRP conjugated as the detection antibody. Range: 19.5-1250 pg/mL



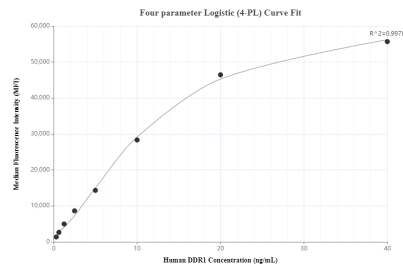
MCF-7 human breast cancer cells (5×10^6 cells/mL) were cultured in DMEM supplemented with 10% fetal bovine serum, 4 mM L-glutamine, 4500mg/L glucose, 100 U/mL penicillin, and 100 μ g/mL streptomycin sulfate. An aliquot of the cell culture supernate was removed, assayed for human DDR1, and measured 19.81 ng/mL



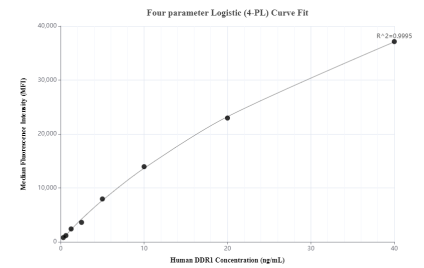
The mean DDR1 concentration was determined to be 9.28 ng/mL in MCF-7 cell extract based on a 1.2 mg/mL extract load.



Serum of four individual healthy human donors was measured. The human DDR1 concentration of detected samples was determined to be 13.63 ng/mL with a range of 9.29 - 18.03 ng/mL



Cytometric bead array standard curve of MP01290-1, DDR1 Recombinant Matched Antibody Pair, PBS Only. Capture antibody: 84438-2-PBS. Detection antibody: 84438-3-PBS. Standard: Eg1675. Range: 0.313-40 ng/mL



Cytometric bead array standard curve of MP01290-3, DDR1 Recombinant Matched Antibody Pair, PBS Only. Capture antibody: 84438-4-PBS. Detection antibody: 84438-3-PBS. Standard: Eg1675. Range: 0.313-40 ng/mL