

For Research Use Only

M-cadherin Recombinant antibody

Catalog Number: 84440-5-RR



Basic Information

Catalog Number:

84440-5-RR

Size:

1000 μ g/ml

Source:

Rabbit

Isotype:

IgG

Immunogen Catalog Number:

AG25763

GenBank Accession Number:

BC008951

GeneID (NCBI):

1013

UNIPROT ID:

P55291

Full Name:

cadherin 15, type 1, M-cadherin (myotubule)

Calculated MW:

89 kDa

Observed MW:

90-130 kDa

Purification Method:

Protein A purification

CloneNo.:

241837C10

Recommended Dilutions:

WB 1:500-1:2000

IF/ICC 1:200-1:800

Applications

Tested Applications:

WB, IF/ICC, ELISA

Species Specificity:

human

Positive Controls:

WB : mouse cerebellum tissue,

IF/ICC : C2C12 cells,

Background Information

Cadherins are a family of transmembrane glycoproteins that mediate calcium-dependent cell-cell adhesion and play an important role in the maintenance of normal tissue architecture. M-cadherin (muscle cadherin), also known as CDH15 (cadherin-15), is a 124-kDa type I transmembrane glycoprotein that is highly expressed in developing skeletal muscle, satellite cells, and cerebellum (PMID: 9545347; 12052883). It associates with β -catenin and functions as a cell-cell adhesion molecule in a homophilic and specific manner (PMID: 9545347). M-cadherin is part of the myogenic program and may provide a trigger for terminal muscle differentiation (PMID: 1840697).

Storage

Storage:

Store at -20°C . Stable for one year after shipment.

Storage Buffer:

PBS with 0.02% sodium azide and 50% glycerol pH 7.3.

Aliquoting is unnecessary for -20°C storage

For technical support and original validation data for this product please contact:

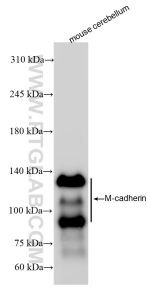
T: 4006900926

E: Proteintech-CN@ptglab.com

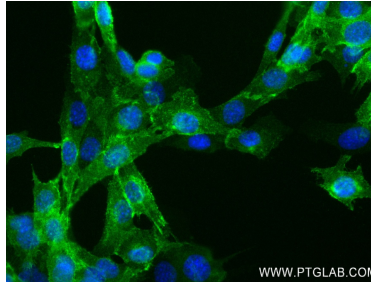
W: ptgcn.com

This product is exclusively available under Proteintech Group brand and is not available to purchase from any other manufacturer.

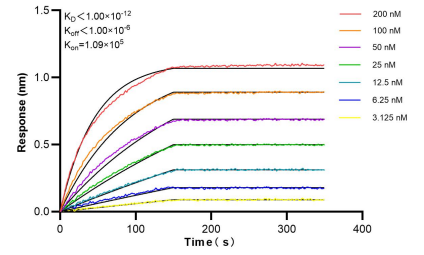
Selected Validation Data



mouse cerebellum tissue was subjected to SDS PAGE followed by western blot with 84440-5-RR (CDH15 antibody) at dilution of 1:1000 incubated at room temperature for 1.5 hours.



Immunofluorescent analysis of (4% PFA) fixed C2C12 cells using CDH15 antibody (84440-5-RR, Clone: 241837C10) at dilution of 1:400 and CoraLite®488-Conjugated Goat Anti-Rabbit IgG(H+L) (SA00013-2).



Biolayer interferometry (BLI) kinetic assays of 84440-5-RR against Human M-cadherin were performed. The affinity constant is below 1 pM.