

For Research Use Only

Acetyl-Histone H2B (Lys16) Recombinant antibody, PBS Only

Catalog Number: 84446-2-PBS



Basic Information

Catalog Number:

84446-2-PBS

Size:

1 mg/ml

Source:

Rabbit

Isotype:

IgG

GenBank Accession Number:

BC005827

GeneID (NCBI):

8349

UNIPROT ID:

Q16778

Full Name:

histone cluster 2, H2be

Calculated MW:

14 kDa

Purification Method:

Protein A purification

CloneNo.:

241194C7

Applications

Tested Applications:

IF/ICC, Dot Blot, Indirect ELISA

Species Specificity:

human

Background Information

Storage

Storage:

Store at -80°C.

The product is shipped with ice packs. Upon receipt, store it immediately at -80°C

Storage Buffer:

PBS Only

For technical support and original validation data for this product please contact:

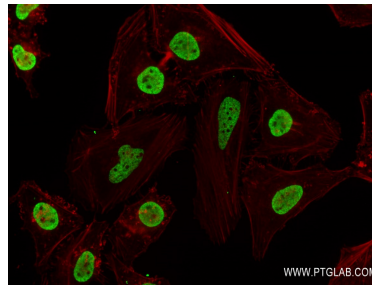
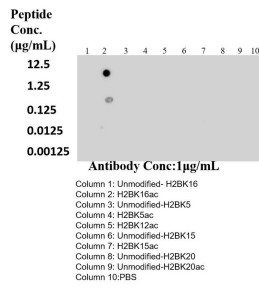
T: 4006900926

E: Proteintech-CN@ptglab.com

W: ptgcn.com

This product is exclusively available under Proteintech Group brand and is not available to purchase from any other manufacturer.

Selected Validation Data



Dot blot analysis was used to confirm the specificity of Acetyl-Histone H2B (Lys16) antibody. Acetylated peptides were spotted onto NC and probed with antibody at 1 µg/ml. The amount of peptide (µg/ml) spotted is indicated next to each row. This data was developed using the same antibody clone with 84446-2-PBS in a different storage buffer formulation.

Immunofluorescent analysis of (4% PFA) fixed HeLa cells using Acetyl-Histone H2B (Lys16) antibody (84446-2-RR, Clone: 241194C7) at dilution of 1:200 and Multi-rAb CoraLite® Plus 488-Goat Anti-Rabbit Recombinant Secondary Antibody (H+L) (RGAR002). This data was developed using the same antibody clone with 84446-2-PBS in a different storage buffer formulation.