

For Research Use Only

# Acetyl-Histone H2B (Lys16) Recombinant antibody

Catalog Number: 84446-2-RR



## Basic Information

Catalog Number:

84446-2-RR

Size:

1000 µg/ml

Source:

Rabbit

Isotype:

IgG

GenBank Accession Number:

BC005827

GeneID (NCBI):

8349

UNIPROT ID:

Q16778

Full Name:

histone cluster 2, H2be

Calculated MW:

14 kDa

Purification Method:

Protein A purification

CloneNo.:

241194C7

Recommended Dilutions:

IF/ICC 1:50-1:500

## Applications

Tested Applications:

IF/ICC, Dot Blot, ELISA

Species Specificity:

human

Positive Controls:

IF/ICC : HeLa cells,

## Background Information

### Storage

Storage:

Store at -20°C. Stable for one year after shipment.

Storage Buffer:

PBS with 0.02% sodium azide and 50% glycerol pH 7.3.

Aliquoting is unnecessary for -20°C storage

For technical support and original validation data for this product please contact:

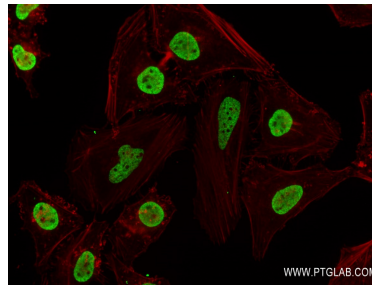
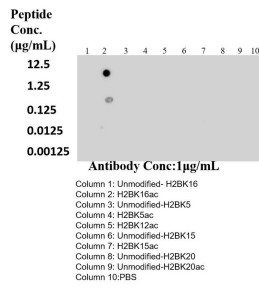
T: 4006900926

E: [Proteintech-CN@ptglab.com](mailto:Proteintech-CN@ptglab.com)

W: [ptgcn.com](http://ptgcn.com)

This product is exclusively available under Proteintech Group brand and is not available to purchase from any other manufacturer.

## Selected Validation Data



Dot blot analysis was used to confirm the specificity of Acetyl-Histone H2B (Lys16) antibody. Acetylated peptides were spotted onto NC and probed with antibody at 1 µg/mL. The amount of peptide (µg/mL) spotted is indicated next to each row.

Immunofluorescent analysis of (4% PFA) fixed HeLa cells using Acetyl-Histone H2B (Lys16) antibody (84446-2-RR, Clone: 241194C7) at dilution of 1:200 and Multi-rAb CoraLite® Plus 488-Goat Anti-Rabbit Recombinant Secondary Antibody (H+L) (RGAR002).