

For Research Use Only

GMEB1-Specific Recombinant antibody

Catalog Number: 84448-1-RR



Basic Information

Catalog Number:

84448-1-RR

Size:

1000 µg/ml

Source:

Rabbit

Isotype:

IgG

GenBank Accession Number:

NM_006582

GeneID (NCBI):

10691

UNIPROT ID:

Q9Y692

Full Name:

glucocorticoid modulatory element binding protein 1

Calculated MW:

63 kDa

Observed MW:

88 kDa

Purification Method:

Protein A purification

CloneNo.:

241447C6

Recommended Dilutions:

WB 1:5000-1:50000

Applications

Tested Applications:

WB, FC (Intra), ELISA

Species Specificity:

human

Positive Controls:

WB : HeLa cells, A549 cells, Daudi cells

Background Information

GMEB1 is a trans-acting factor that binds to glucocorticoid modulatory elements (GME), acting in estrogen receptor-regulated pathway GREB1 is expressed in proliferating prostate tissue & prostate cancer and is thought to function in hormone-dependent cancer growth. It associates with GMEB2 protein, and the complex is essential for parvovirus DNA replication.

Storage

Storage:

Store at -20°C. Stable for one year after shipment.

Storage Buffer:

PBS with 0.02% sodium azide and 50% glycerol pH 7.3.

Aliquoting is unnecessary for -20°C storage

For technical support and original validation data for this product please contact:

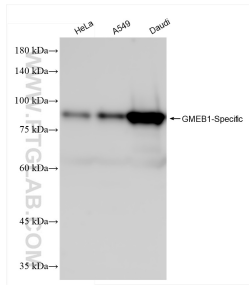
T: 4006900926

E: Proteintech-CN@ptglab.com

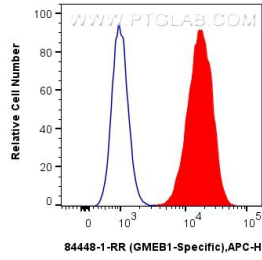
W: ptgcn.com

This product is exclusively available under Proteintech Group brand and is not available to purchase from any other manufacturer.

Selected Validation Data



Various lysates were subjected to SDS PAGE followed by western blot with 84448-1-RR (GMEB1-Specific antibody) at dilution of 1:10000 incubated at room temperature for 1.5 hours.



1×10^6 HeLa cells were intracellularly stained with 0.25 μ g GMEB1-Specific Recombinant antibody (84448-1-RR, Clone:241447C6) and APC-Conjugated Goat Anti-Rabbit IgG(H+L)(red), or 0.25 μ g Isotype Control (blue). Cells were fixed and permeabilized with True-Nuclear Transcription Factor Buffer Set.