

For Research Use Only

Phospho-PLCG2 (Tyr1217) Recombinant antibody, PBS Only

Catalog Number: 84456-1-PBS



Basic Information

Catalog Number:

84456-1-PBS

Size:

1 mg/ml

Source:

Rabbit

Isotype:

IgG

GenBank Accession Number:

BC007565

GeneID (NCBI):

5336

UNIPROT ID:

P16885

Full Name:

phospholipase C, gamma 2
(phosphatidylinositol-specific)

Calculated MW:

148 kDa

Observed MW:

150 kDa

Purification Method:

Protein A purification

CloneNo.:

240631F2

Applications

Tested Applications:

WB, Indirect ELISA

Species Specificity:

human

Background Information

Phospholipase C gamma 2 (PLCG2) belongs to the family of phospholipase C-gamma, which is the downstream molecule of the CSF1R. Previous studies have demonstrated that PLCG2 was required for CSF1-induced differentiation of monocytes, microglia, immune, inflammatory responses. PLCG2 phosphorylation leads to an increase in production of the cellular signaling molecules, diacylglycerol (DAG), and inositol 1,4,5 trisphosphate (IP3), which further promotes a wide range of downstream signals, including the phosphorylation of protein kinase C (PKC) family members, such as PKC epsilon (PKC ϵ). (PMID: 32522286)

Storage

Storage:

Store at -80°C.

The product is shipped with ice packs. Upon receipt, store it immediately at -80°C

Storage Buffer:

PBS Only

For technical support and original validation data for this product please contact:

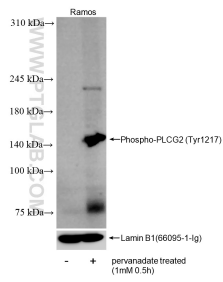
T: 4006900926

E: Proteintech-CN@ptglab.com

W: ptgcn.com

This product is exclusively available under Proteintech Group brand and is not available to purchase from any other manufacturer.

Selected Validation Data



Non-treated and pervanadate treated Ramos cells were subjected to SDS PAGE followed by western blot with 84456-1-RR (Phospho-PLCG2 (Tyr1217) antibody) at dilution of 1:1000 incubated at room temperature for 1.5 hours. The membrane was stripped and re-blotted with Lamin B1 (66095-1-Ig) antibody as a loading control. This data was developed using the same antibody clone with 84456-1-PBS in a different storage buffer formulation.