

For Research Use Only

# P2RX6 Recombinant antibody, PBS Only

Catalog Number: 84458-4-PBS



## Basic Information

<b>Catalog Number:</b> 84458-4-PBS	<b>GenBank Accession Number:</b> BC033488	<b>Purification Method:</b> Protein A purification
<b>Size:</b> 1 mg/ml	<b>GeneID (NCBI):</b> 9127	<b>CloneNo.:</b> 241620B10
<b>Source:</b> Rabbit	<b>UNIPROT ID:</b> O15547	
<b>Isotype:</b> IgG	<b>Full Name:</b> purinergic receptor P2X, ligand-gated ion channel, 6	
<b>Immunogen Catalog Number:</b> AG12331	<b>Calculated MW:</b> 431 aa, 48 kDa	
	<b>Observed MW:</b> 45 kDa	

## Applications

**Tested Applications:**  
WB, Indirect ELISA

**Species Specificity:**  
human, mouse

## Background Information

The P2 receptors have two subfamilies in mammalian cells, P2X and P2Y. P2X family of ligand-gated ion channel receptors have seven members, P2RX1-7, which all constitute non-selective cation channels proposed to be functional under a homo- or heterotrimeric association. P2RX6 is predominantly expressed in skeletal muscle, and regulated by p53. It's reported that ATP might increase renal cell carcinoma cells migration and invasion through P2RX6. (PMID: 31159832, PMID: 9242461)

## Storage

**Storage:**  
Store at -80°C.  
**The product is shipped with ice packs. Upon receipt, store it immediately at -80°C**

**Storage Buffer:**  
PBS Only

For technical support and original validation data for this product please contact:

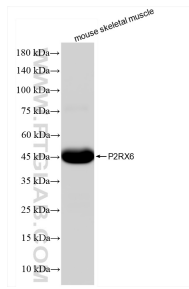
T: 4006900926

E: [Proteintech-CN@ptglab.com](mailto:Proteintech-CN@ptglab.com)

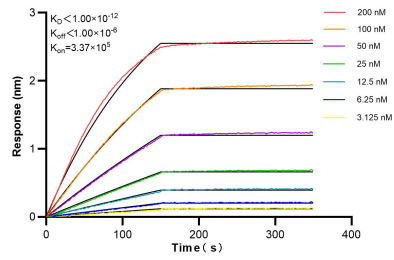
W: [ptgcn.com](http://ptgcn.com)

**This product is exclusively available under Proteintech Group brand and is not available to purchase from any other manufacturer.**

## Selected Validation Data



mouse skeletal muscle tissue were subjected to SDS PAGE followed by western blot with 84458-4-RR (P2RX6 antibody) at dilution of 1:4000 incubated at room temperature for 1.5 hours. This data was developed using the same antibody clone with 84458-4-PBS in a different storage buffer formulation.



Biolayer interferometry (BLI) kinetic assays of 84458-4-RR against Human P2RX6 were performed. The affinity constant is below 1 pM.