

For Research Use Only

Integrin alpha 6 Recombinant antibody, PBS Only

Catalog Number: 84463-3-PBS



Basic Information

Catalog Number: 84463-3-PBS	GenBank Accession Number: BC136456	Purification Method: Protein A purification
Size: 1 mg/ml	GeneID (NCBI): 3655	CloneNo.: 241703B5
Source: Rabbit	UNIPROT ID: P23229	
Isotype: IgG	Full Name: integrin, alpha 6	
	Calculated MW: 1073 aa, 119 kDa	
	Observed MW: 120 kDa	

Applications

Tested Applications:
WB, IF/ICC, Indirect ELISA

Species Specificity:
human

Background Information

Storage

Storage:
Store at -80°C.
The product is shipped with ice packs. Upon receipt, store it immediately at -80°C

Storage Buffer:
PBS Only

For technical support and original validation data for this product please contact:

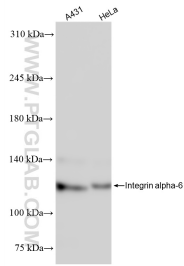
T: 4006900926

E: Proteintech-CN@ptglab.com

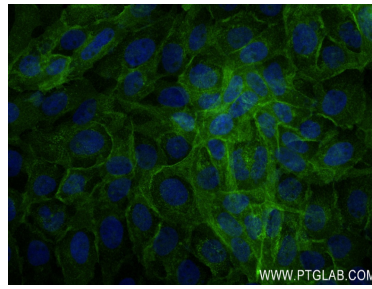
W: ptgcn.com

This product is exclusively available under Proteintech Group brand and is not available to purchase from any other manufacturer.

Selected Validation Data



Various lysates were subjected to SDS PAGE followed by western blot with 84463-3-RR (Integrin alpha 6 antibody) at dilution of 1:2000 incubated at room temperature for 1.5 hours. This data was developed using the same antibody clone with 84463-3-PBS in a different storage buffer formulation.



Immunofluorescent analysis of (4% PFA) fixed A431 cells using Integrin alpha-6 antibody (84463-3-RR, Clone: 241703B5) at dilution of 1:400 and CoraLite®488-Conjugated Goat Anti-Mouse IgG(H+L) (SA00013-1). This data was developed using the same antibody clone with 84463-3-PBS in a different storage buffer formulation.